



WASHINGTON DC



Washington DC

NEW YORK

PENNSYLVANIA

MASS

CONN

RI

NEW JERSEY

DELAWARE

MARYLAND

DC

OHIO

WEST VIRGINIA

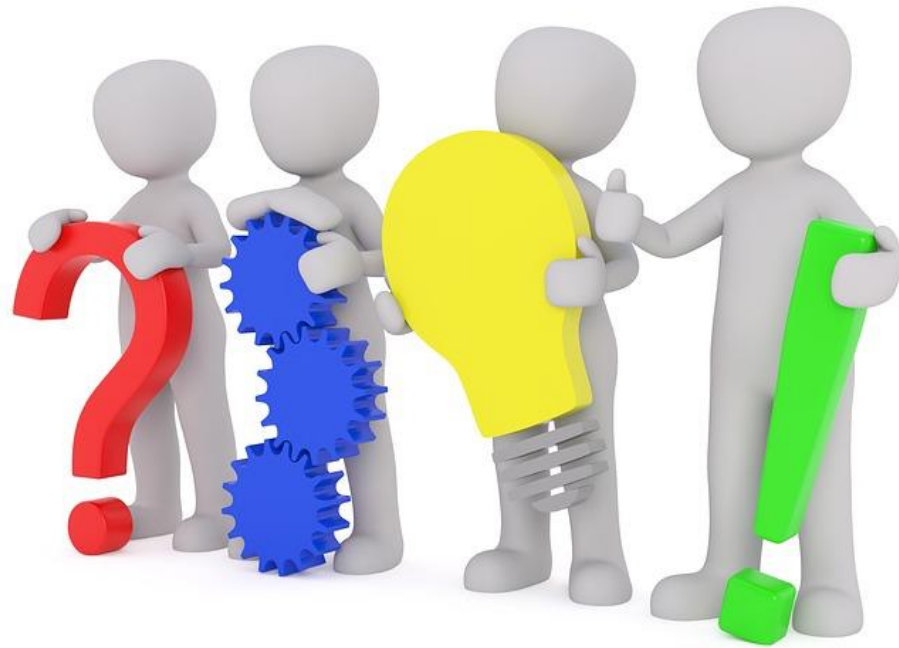
VIRGINIA

GAN



Washington is the **capital**
of the
**United States of
America.**

POPULATION



681.170



Its population is
employed in the
Federal Offices



It is located on the east coast of
the United States about **50 km**
from the **sea**

A nighttime photograph of Washington, D.C., featuring the White House and the Washington Monument. The White House is brightly lit, and the Washington Monument stands tall in the background. The ground is covered in snow, and the sky is a mix of blue and orange from the setting or rising sun. The text is overlaid on a semi-transparent dark grey box in the lower half of the image.

The city enjoys a climate
characterized
by harsh winter and very
hot Summers

A photograph of the Washington Monument at night, illuminated and reflected in the water of the reflecting pool. The sky is a mix of blue and orange, suggesting dusk or dawn. The US Capitol building is visible in the background to the left. The text 'Washington is quite expensive for us Italian' is overlaid on the right side of the image.

Washington
is quite
expensive
for us
Italian



THE WHITE HOUSE

The white house is located
in the middle of a beautiful **green** area





Inside there are famous rooms such as the **blue** and the **green** room



WASHINGTON MONUMENT



Dedicated to the **first** President



CAPITOL HILL

Near the Campidoglio is the Library
of Congress, the largest library in
the world with a collection of more
than **147 million** books



There are two metro
stops
that are closer to the
Capitol Hill





Capitol South



**The station was opened
On 1 July 1977**



Union Station



FILMS



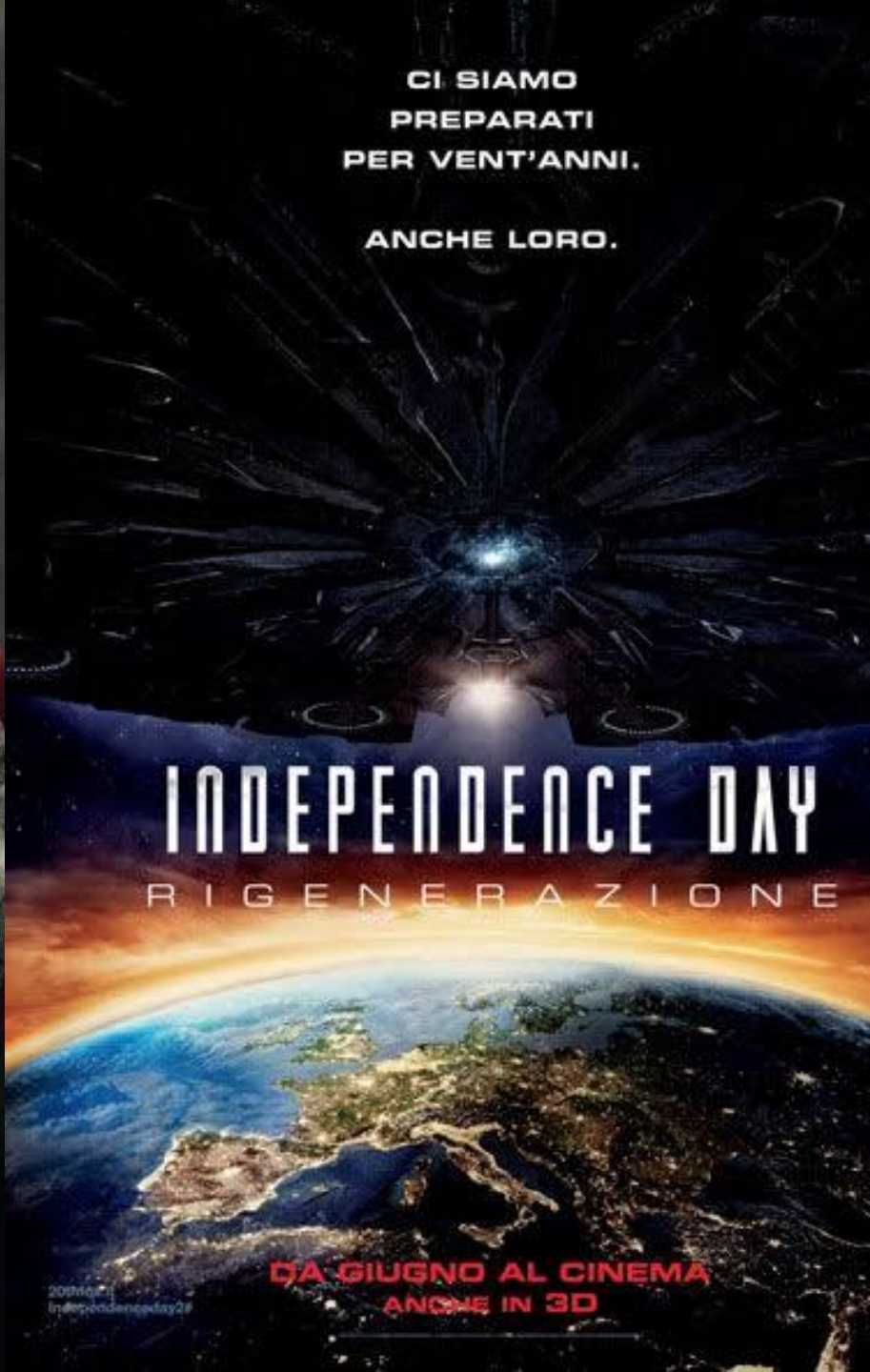


MARVEL STUDIOS

CAPTAIN AMERICA

THE FIRST AVENGER

ONLY IN THEATERS



CI SIAMO
PREPARATI
PER VENT'ANNI.

ANCHE LORO.

INDEPENDENCE DAY

RIGENERAZIONE

DA GIUGNO AL CINEMA
ANCHE IN 3D

©2016 Twentieth Century Fox Film Corporation.
IndependenceDay2#



MONUMENTS

NATIONAL AIR AND SPACE

SPACE

The National Air and Space Museum in Washington D.C. it is the most important museum dedicated to space flights

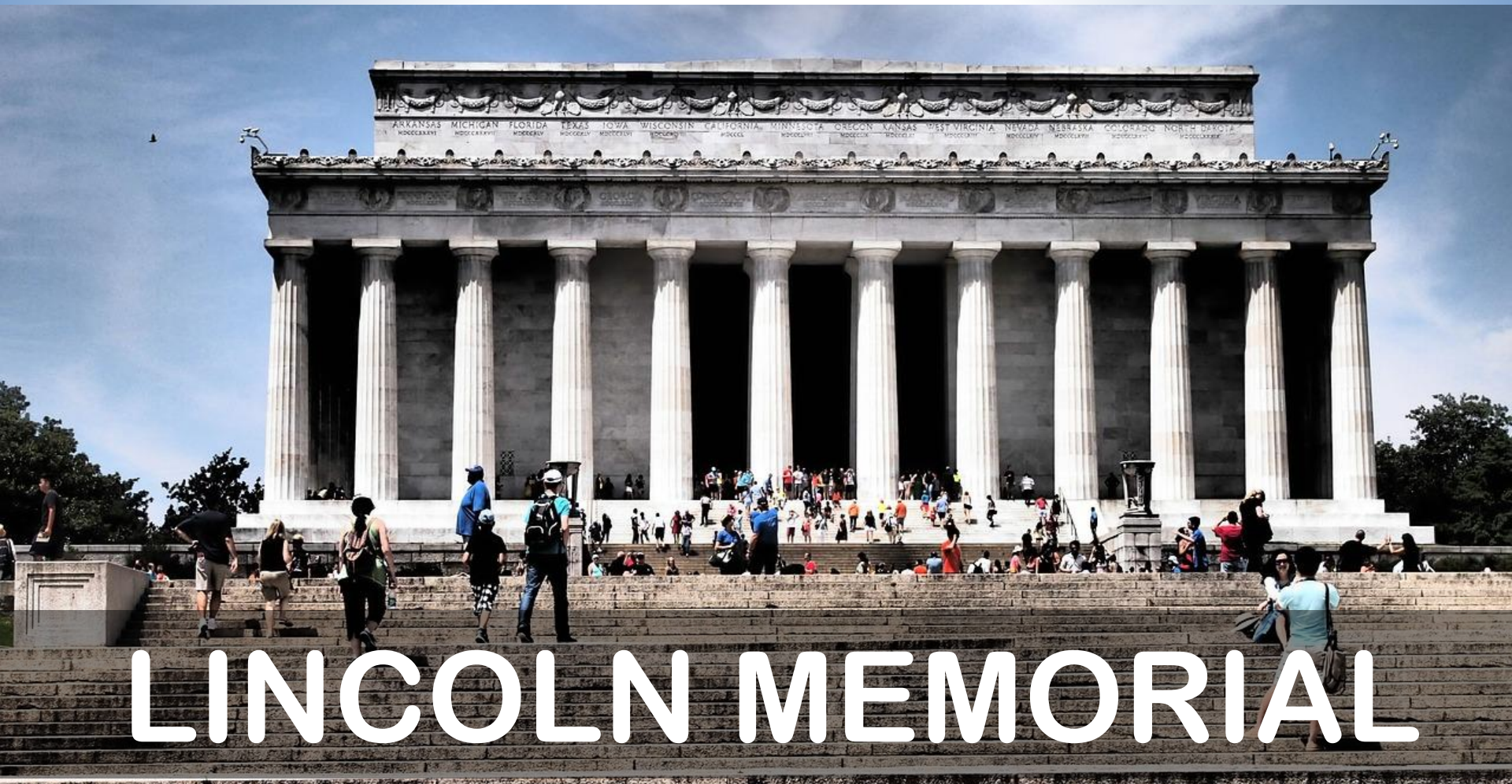




JAFFERSON MEMORIAL

**Il Thomas Jefferson Memorial è un
monumento costruito in onore di
[Thomas Jefferson](#)**

The Lincoln Memorial is a monument built in honor of Abraham Lincoln, the 16th president of the United States



LINCOLN MEMORIAL



**ZooLights is the national
washington zoo**

**The national zoo presents
an exhibition of
thousands of sparkling
lights with sculptures of
many animals**

**The national mall is a large
monumental avenue**

**It is part of the "National
Mall & Memorial Parks",
a government agency that
manages all US National
Parks.**



THE MALL

FOOD



APPLE PIE



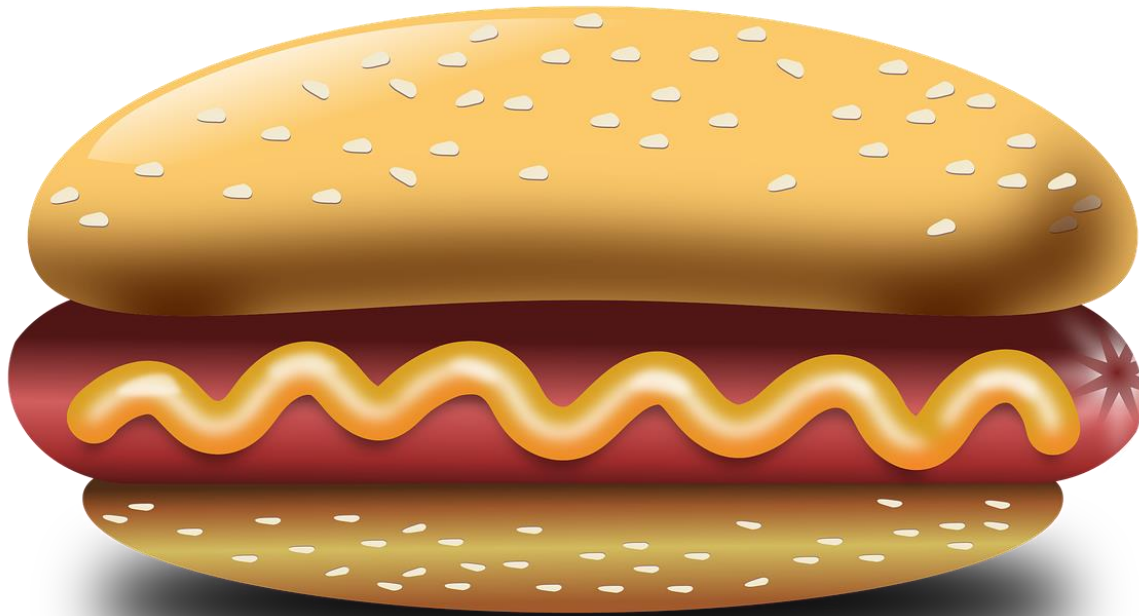
Typical **Anglo-Saxon**
cake, stuffed with apple
and cinnamon, covered
with a short pastry
dough.



HOT DOG



The hot dog is a stuffed sandwich, often seasoned with ketchup, mayonnaise or mustard and potatoes accompanied by vegetables





3°C

Valentina-Eleonora-Damiano