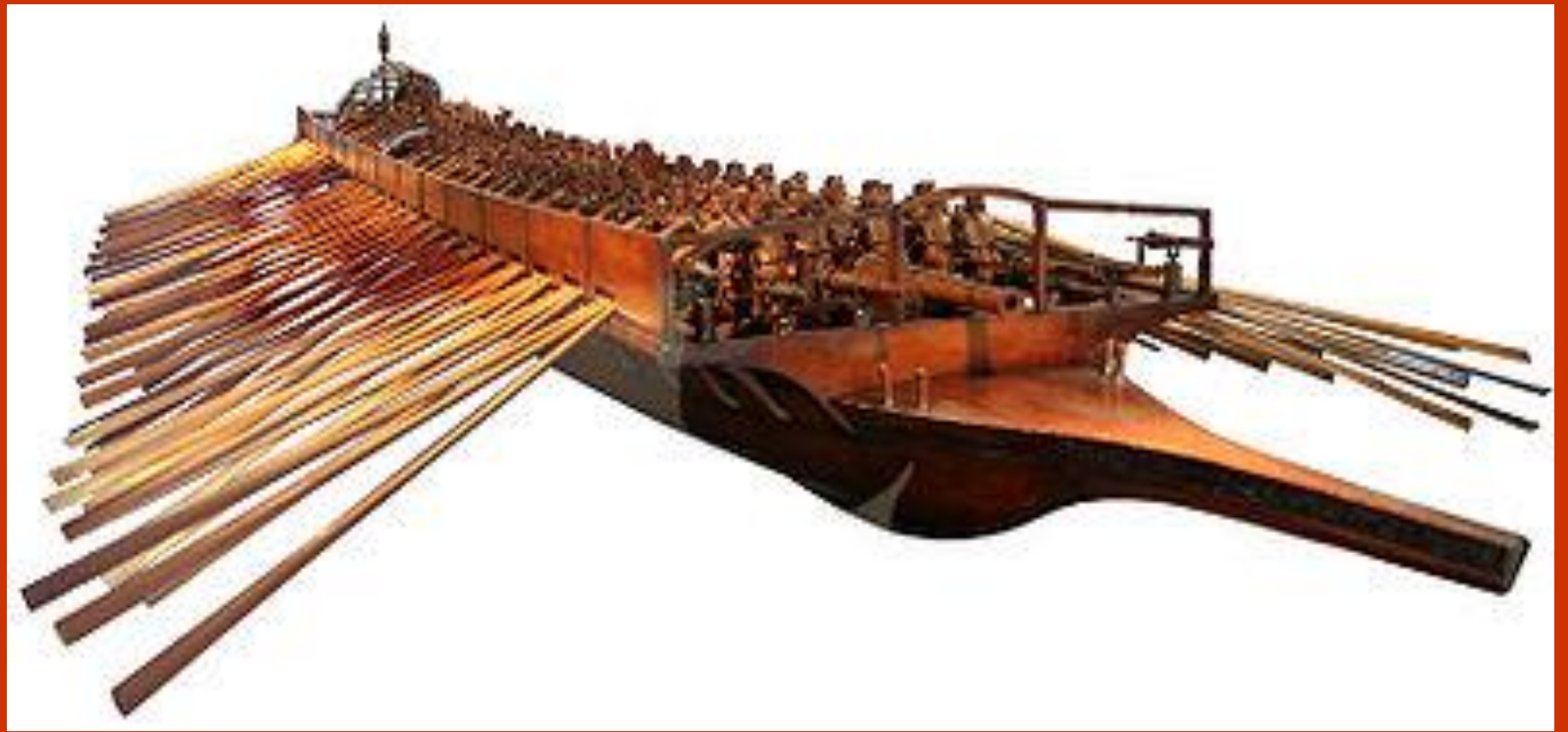


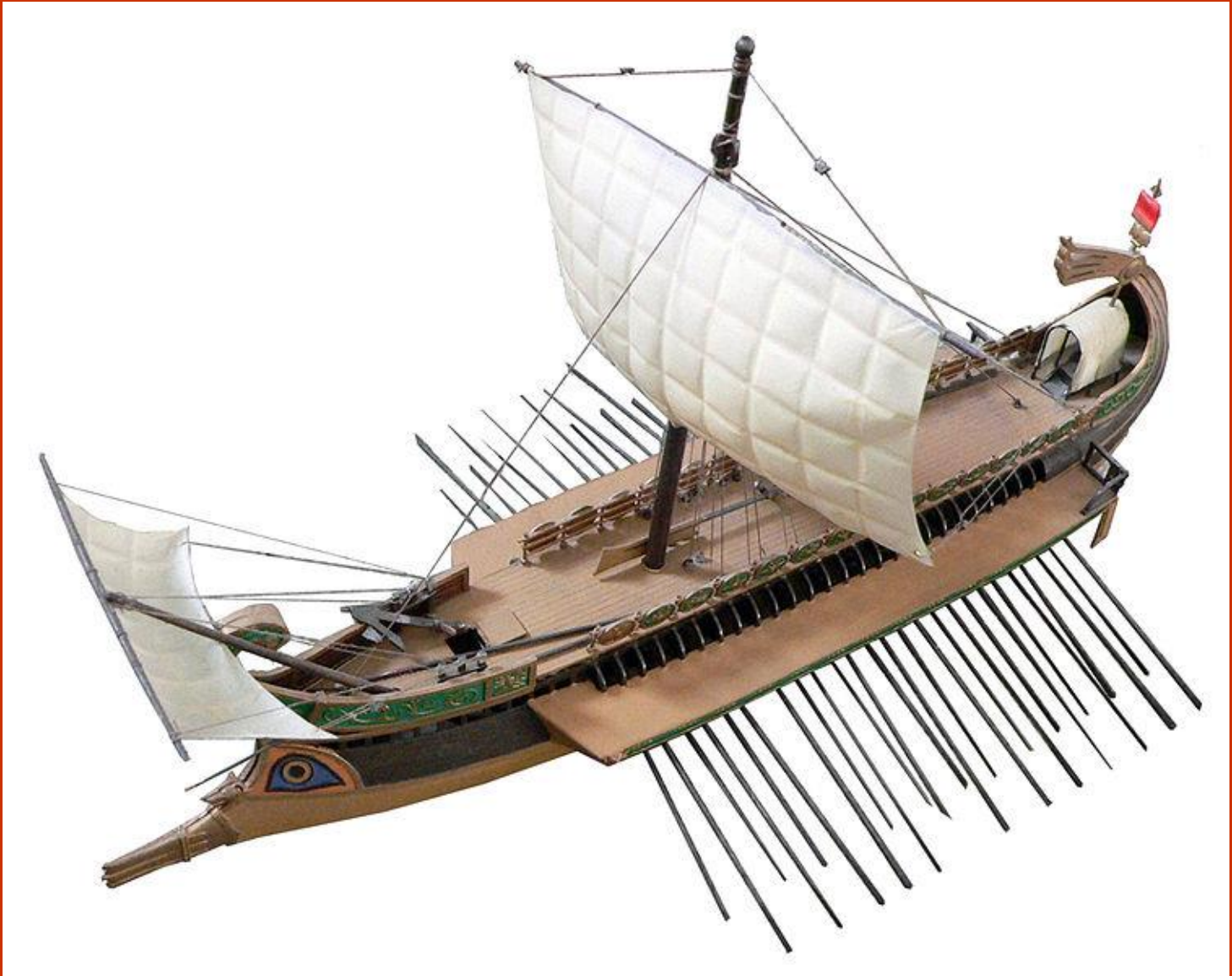
L'EVOLUZIONE DELLA NAVE



2000 A.C.



1000 A.C.



500 A.C.



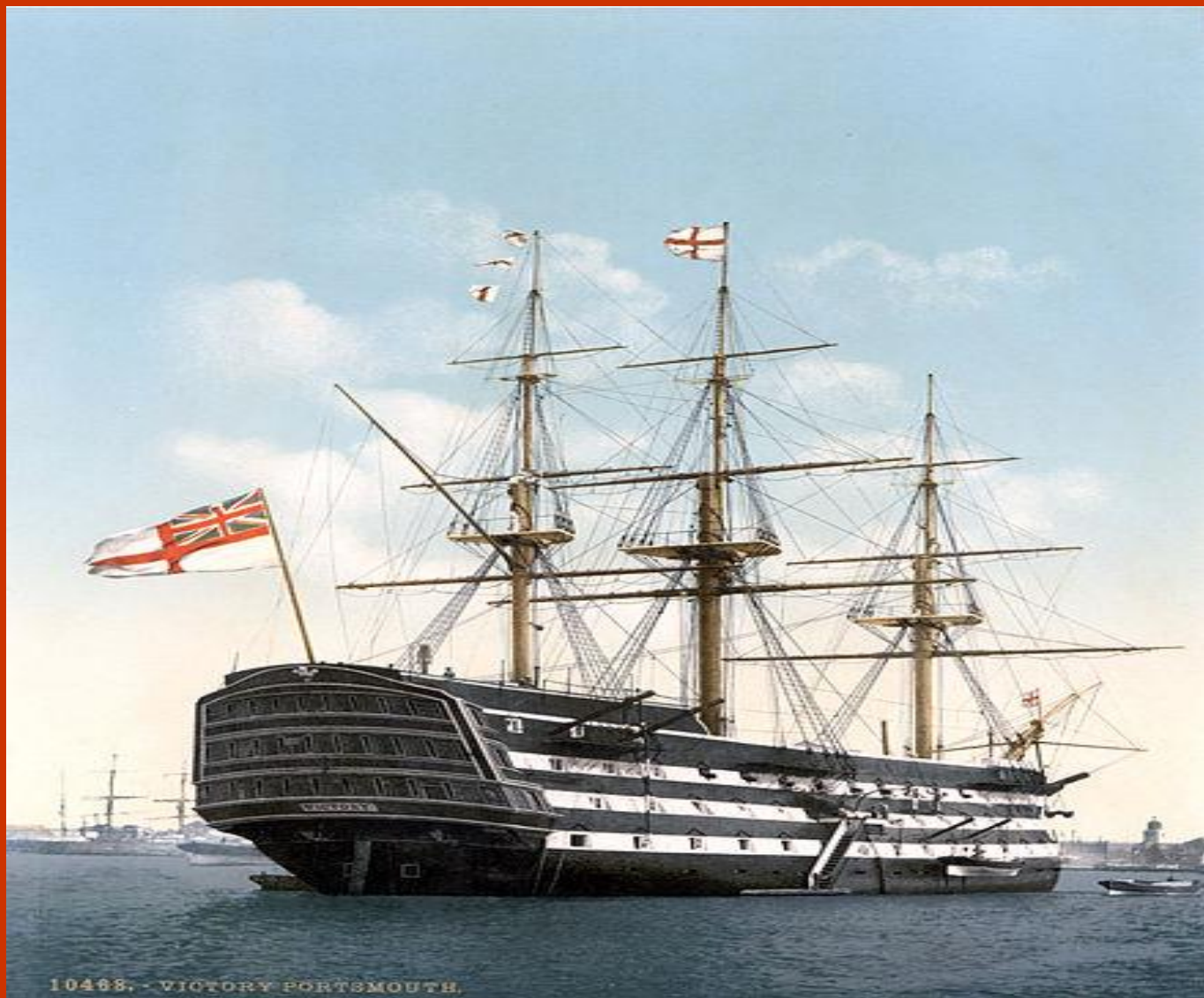
1200



1400



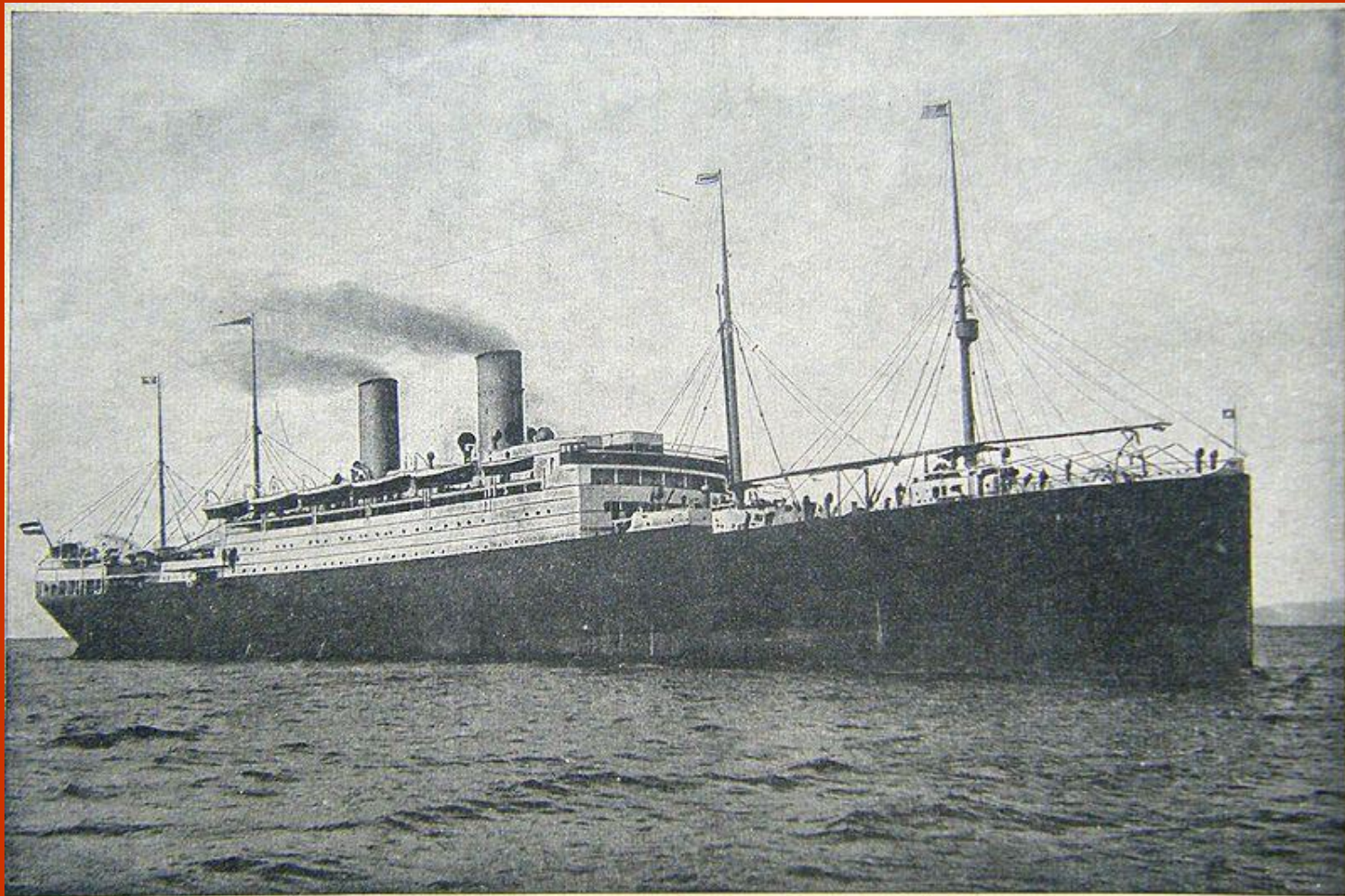
1500



1600

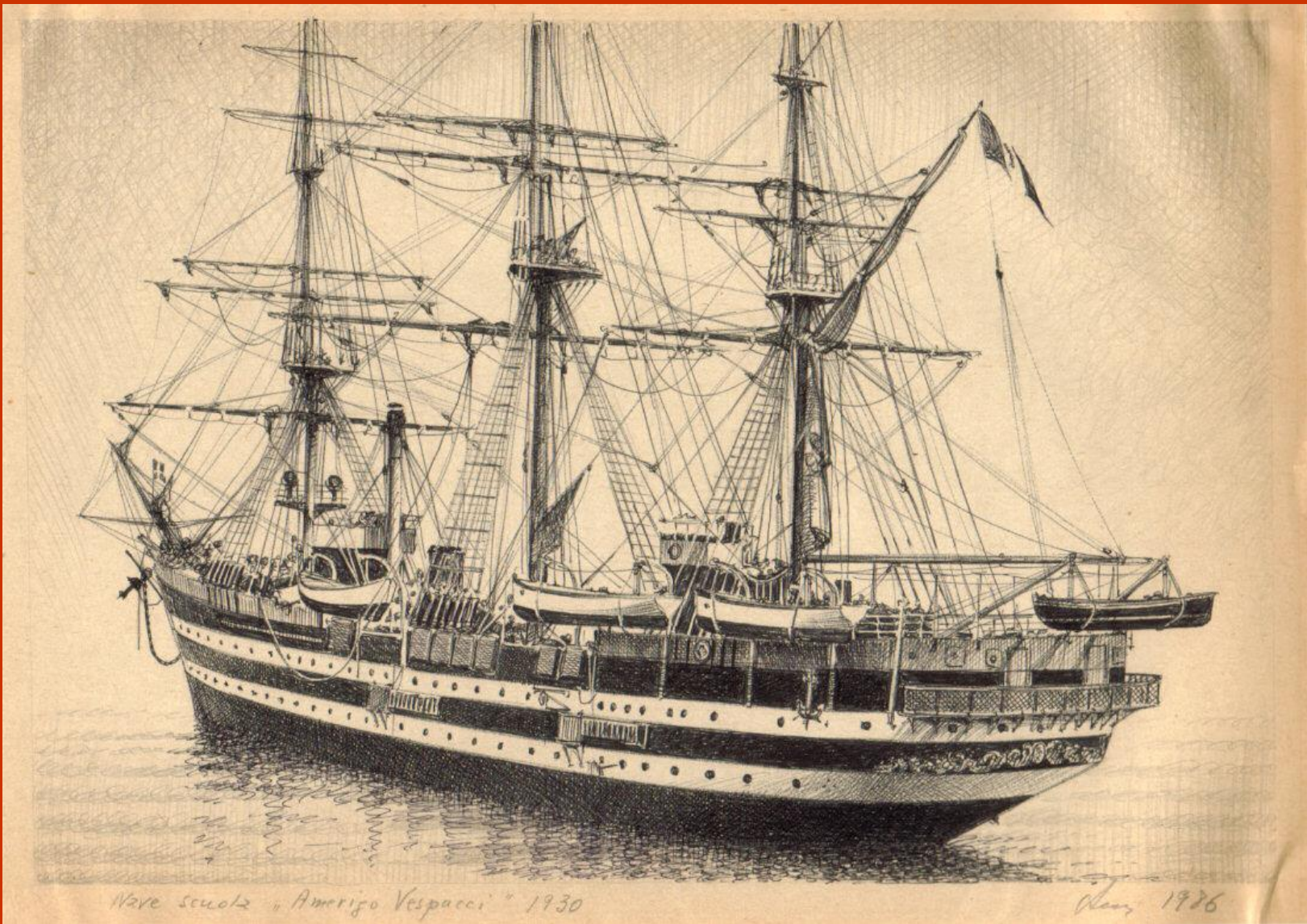


1800



Vapore "CINCINNATI,, di tonnellate 17.000.
Nuovissimo grandioso transatlantico a doppia elica, con installazioni di gran lusso

1910



1930



1950



1970



1980



1990



2000



2010

FINE