



presenta

VIAGGIO NELL'UNIVERSO

Alla scoperta dei tesori della Via Lattea



ATENEIO DI SCIENZE
LETTERE E ARTI DI BERGAMO

Lunedì 20 aprile 2009

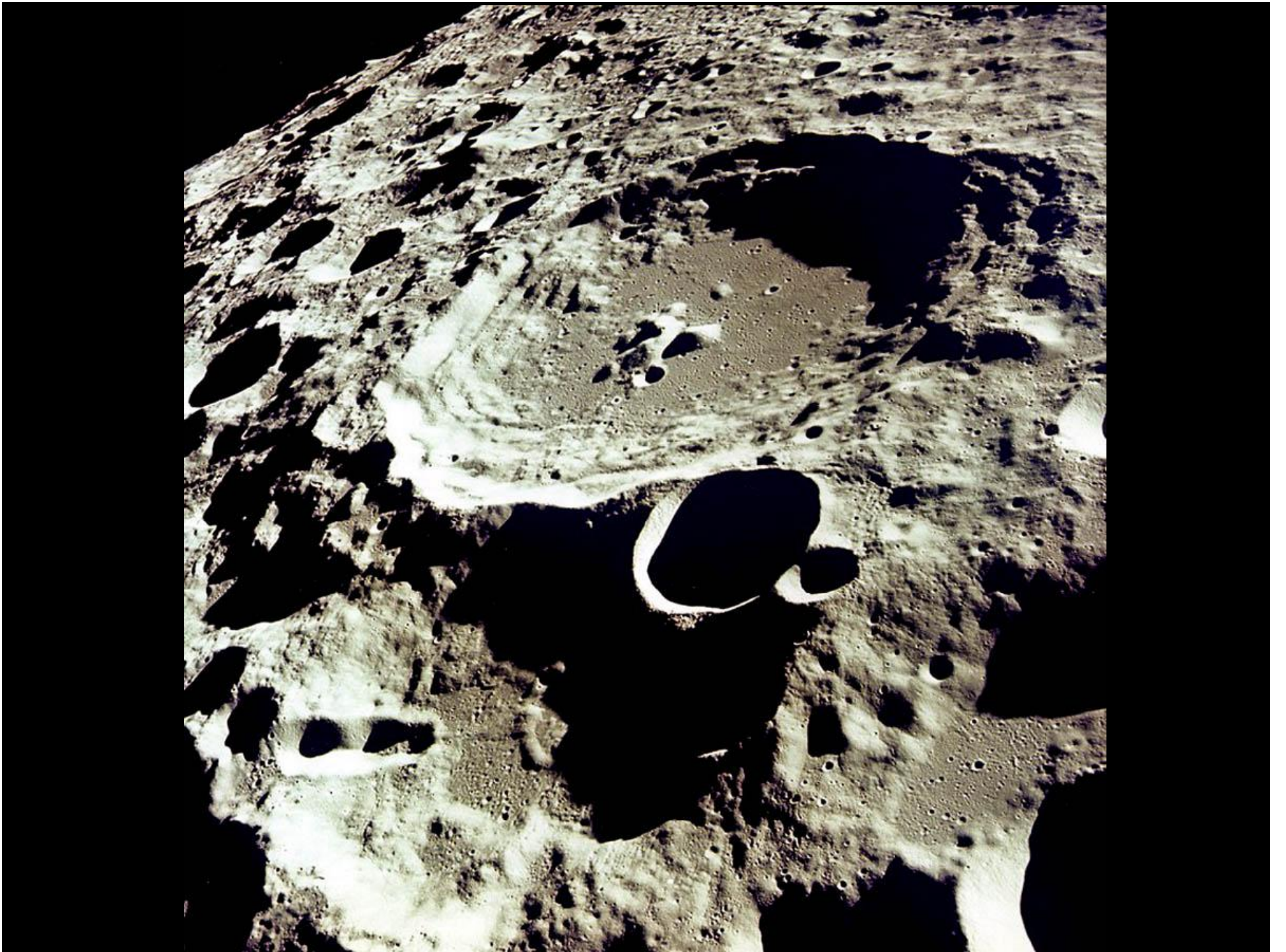


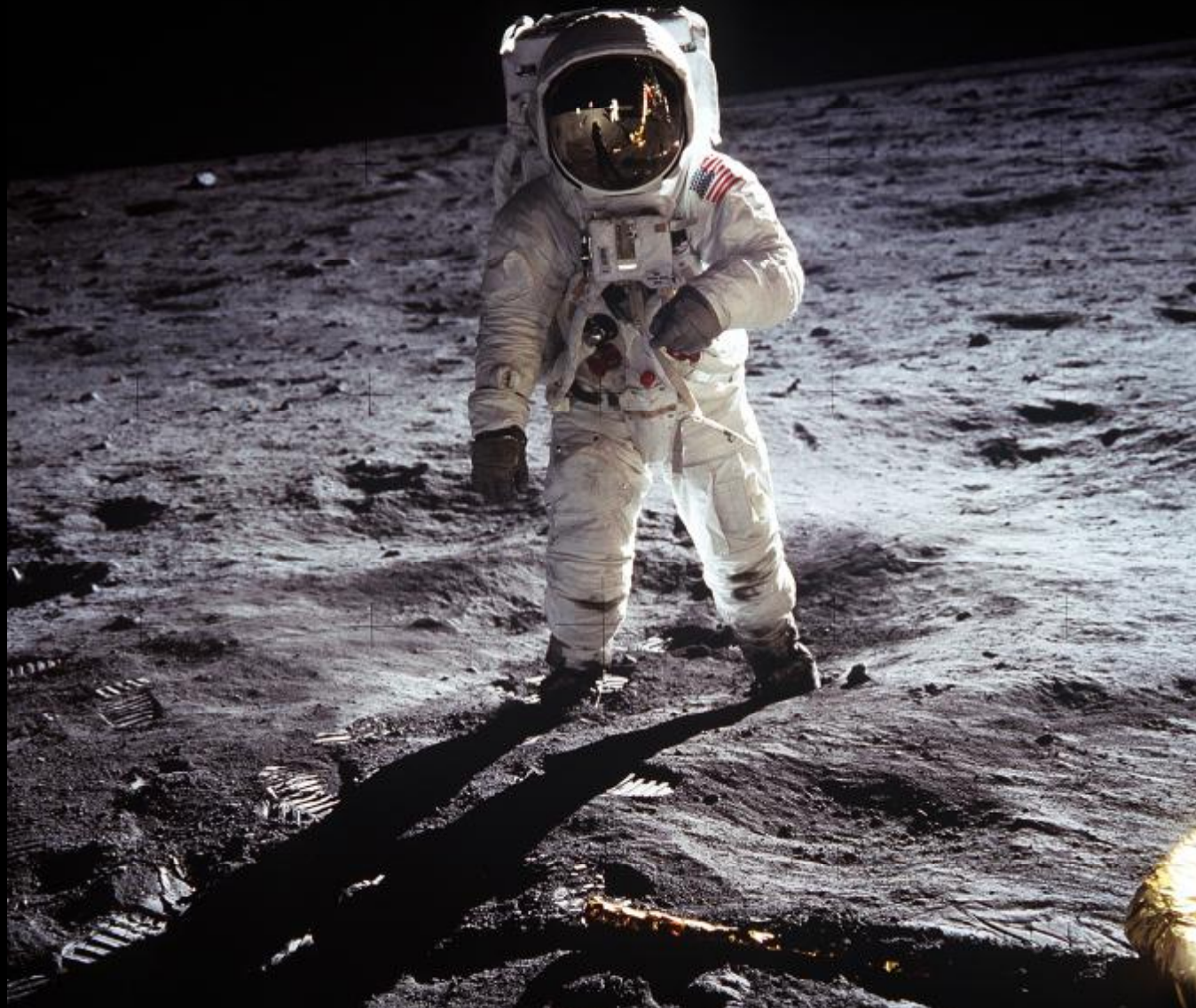
Orbita lunare

Luna

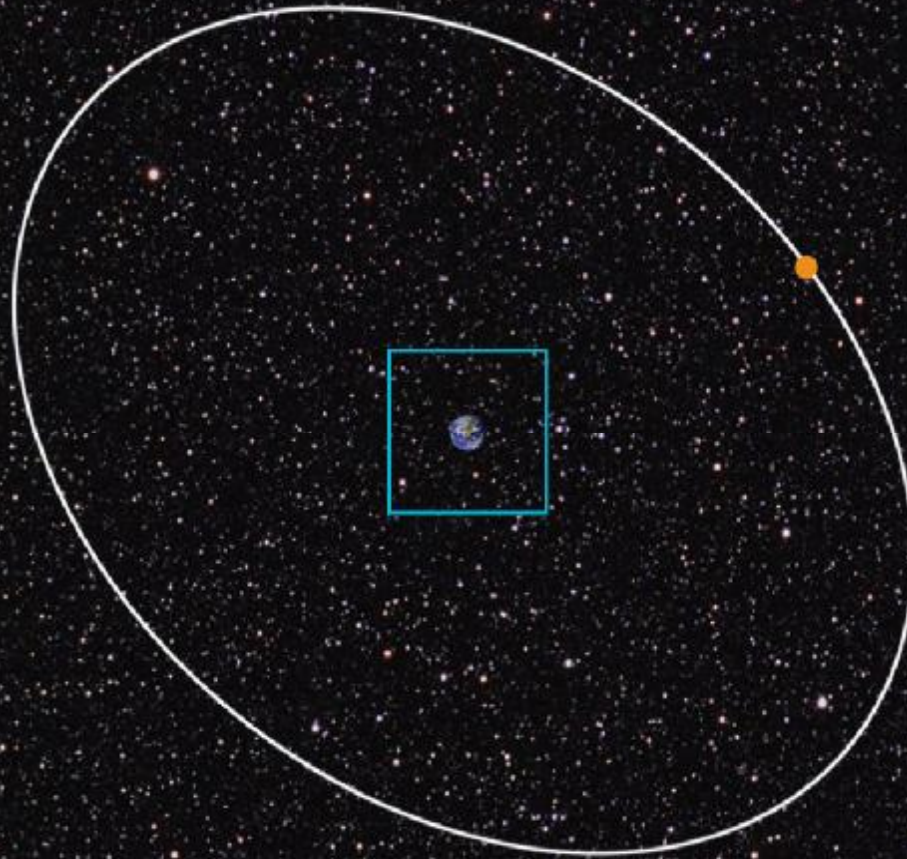


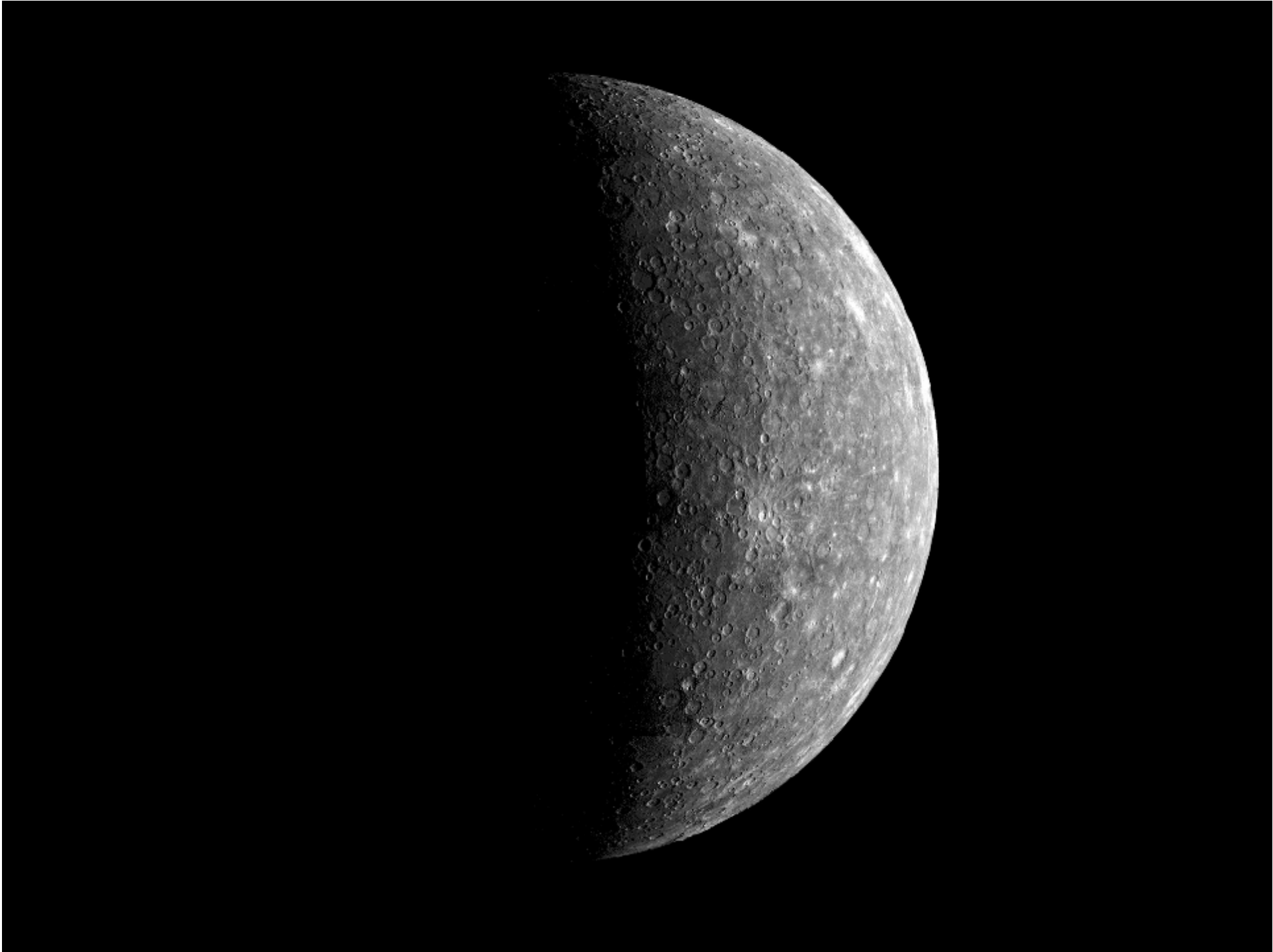


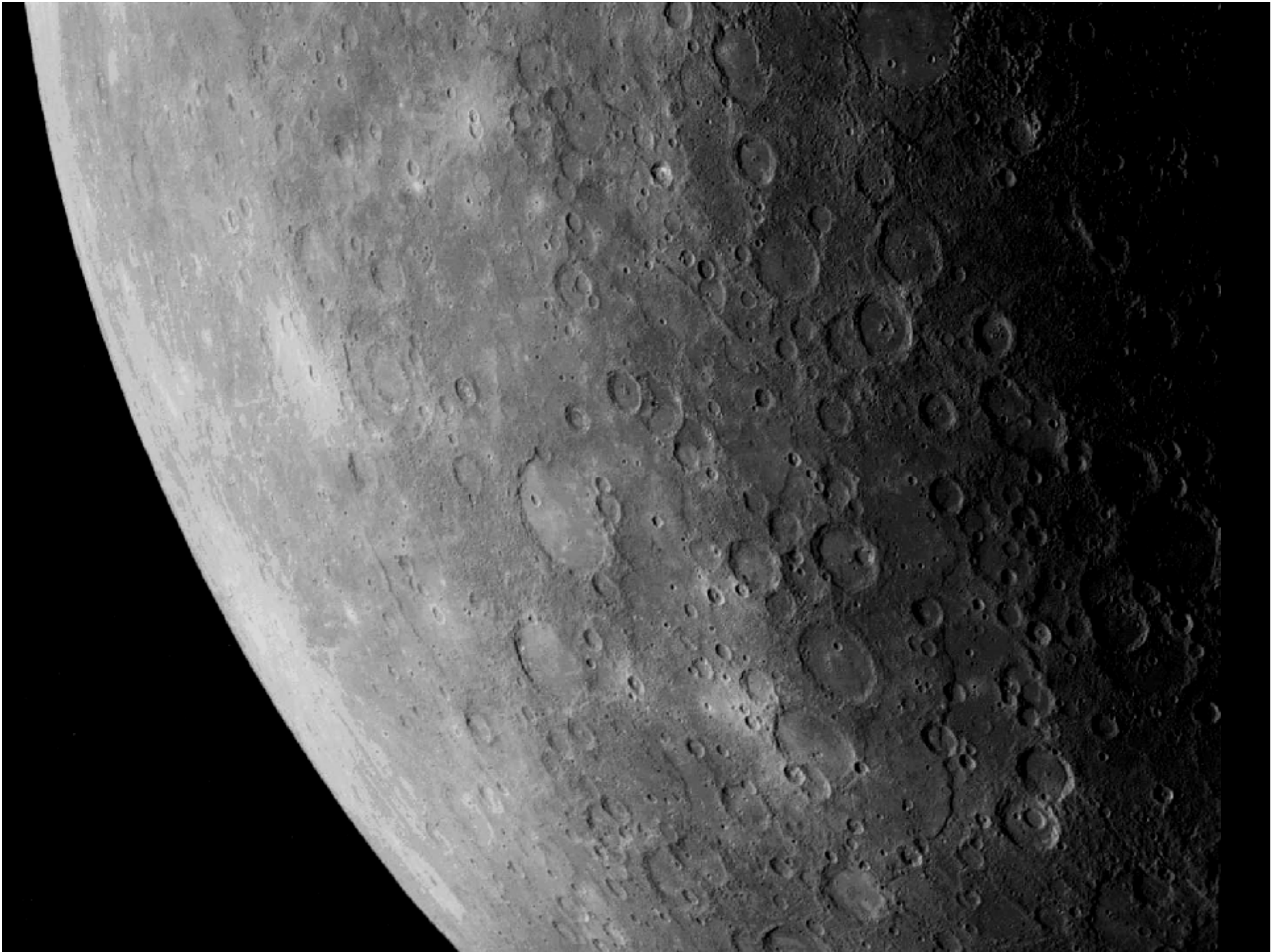




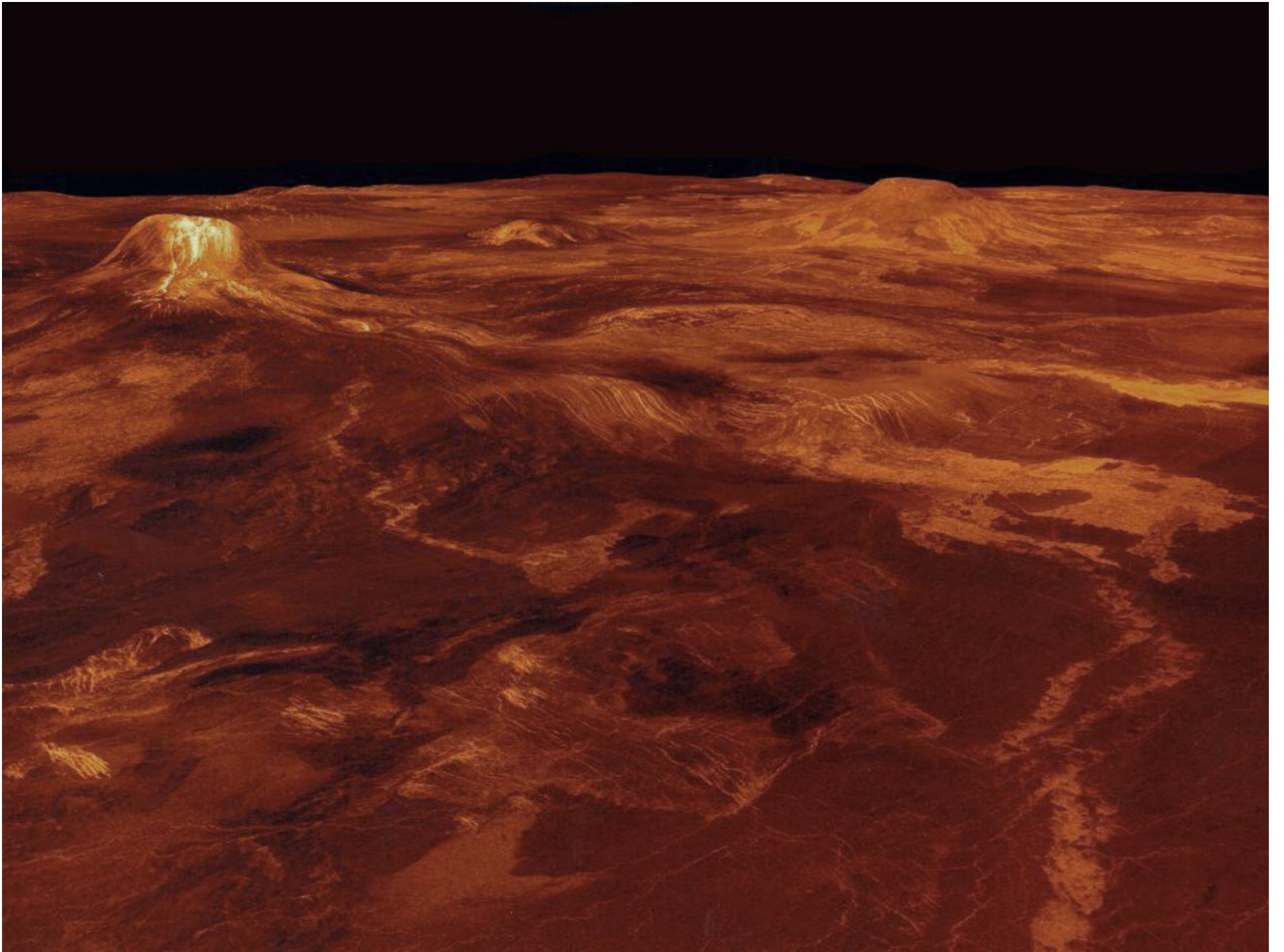
1.000.000 km

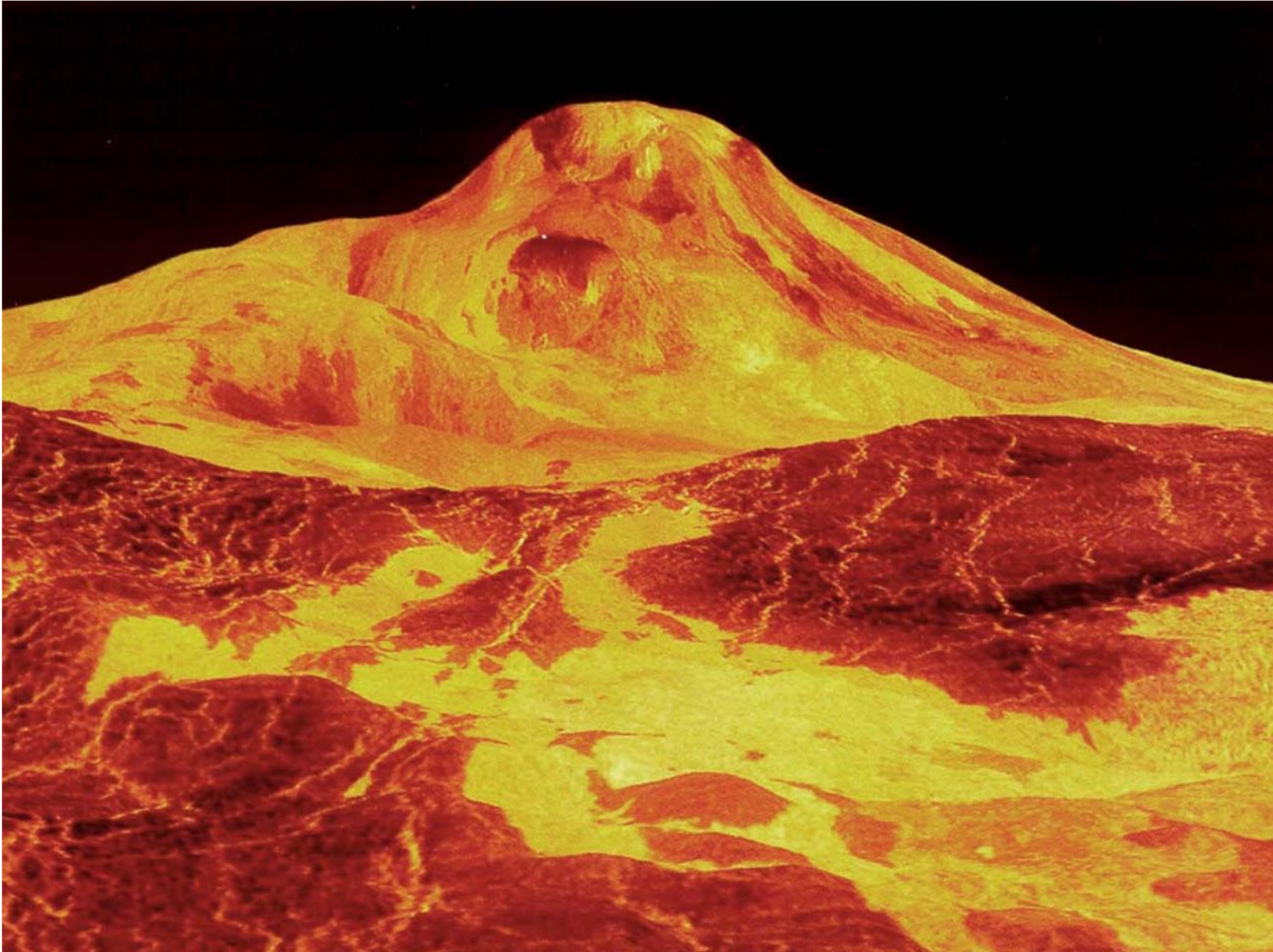


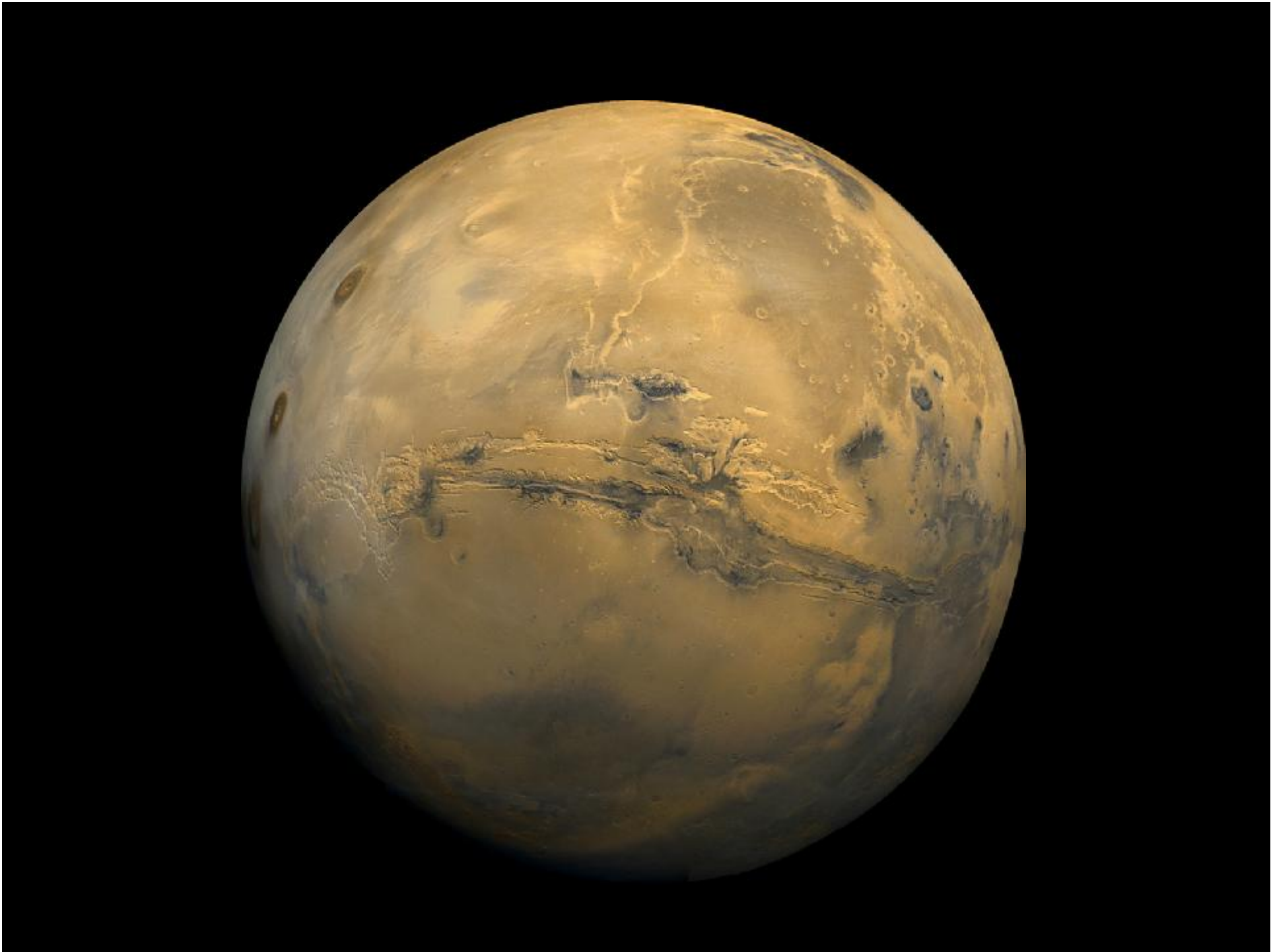


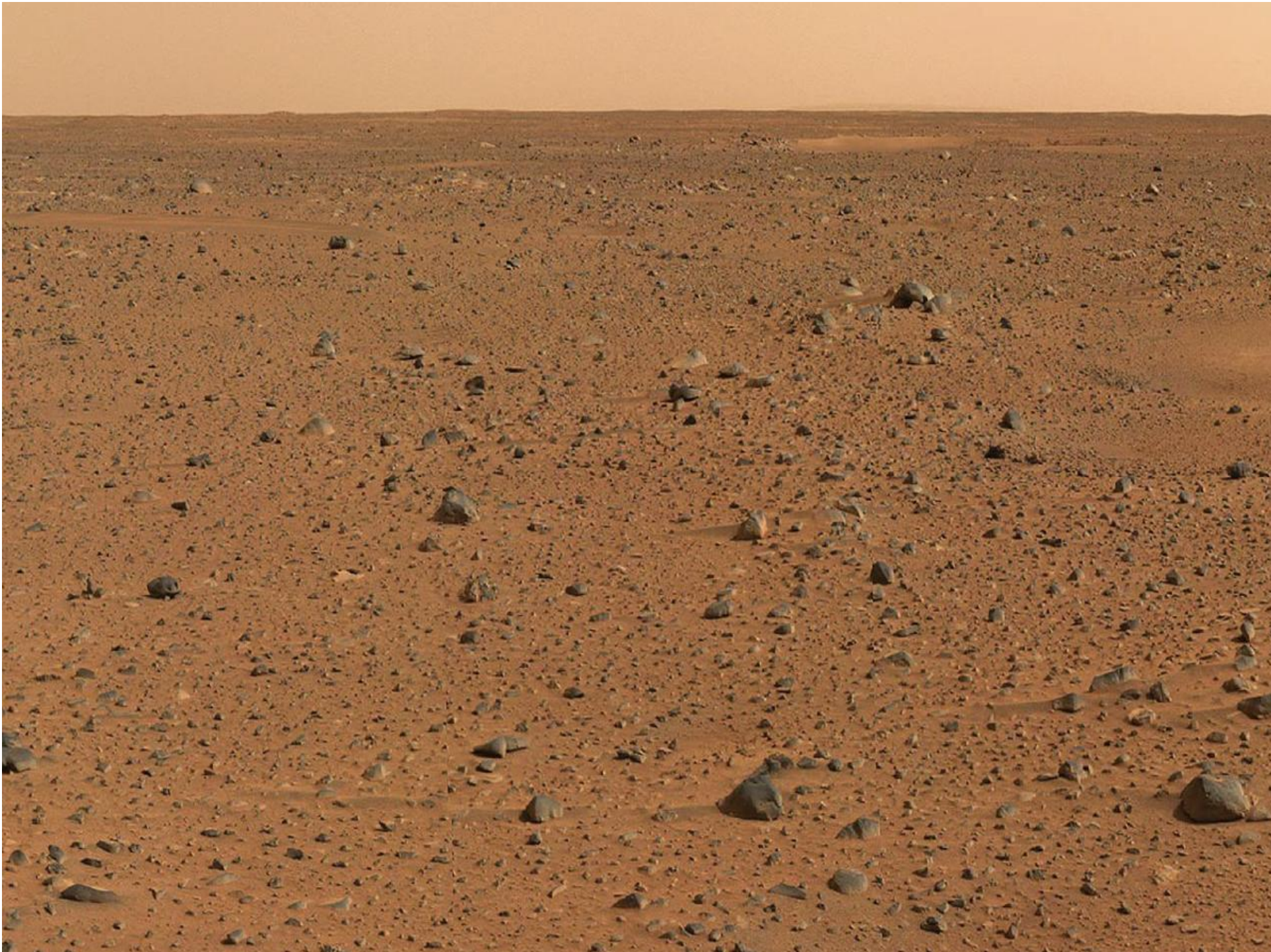


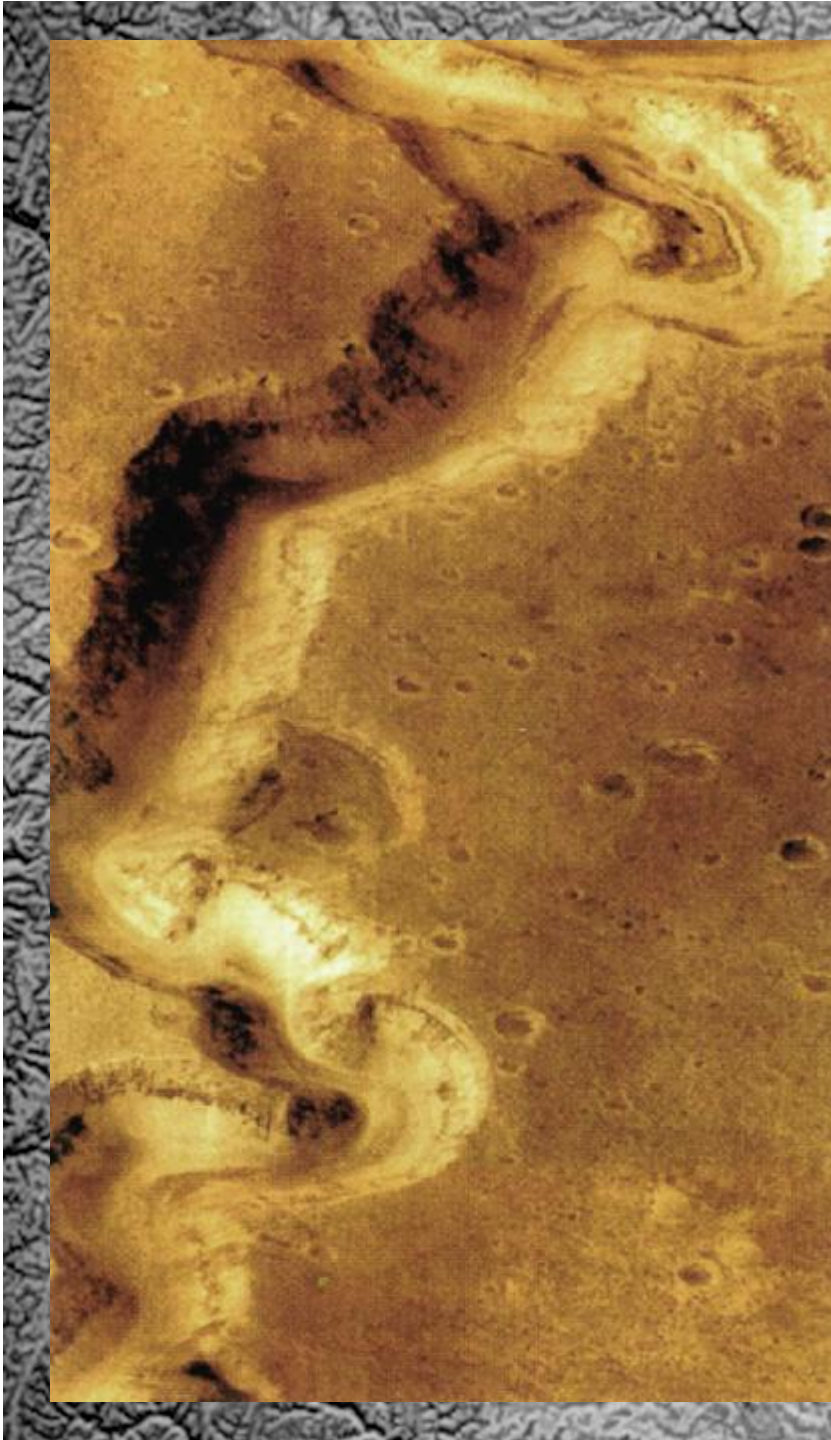


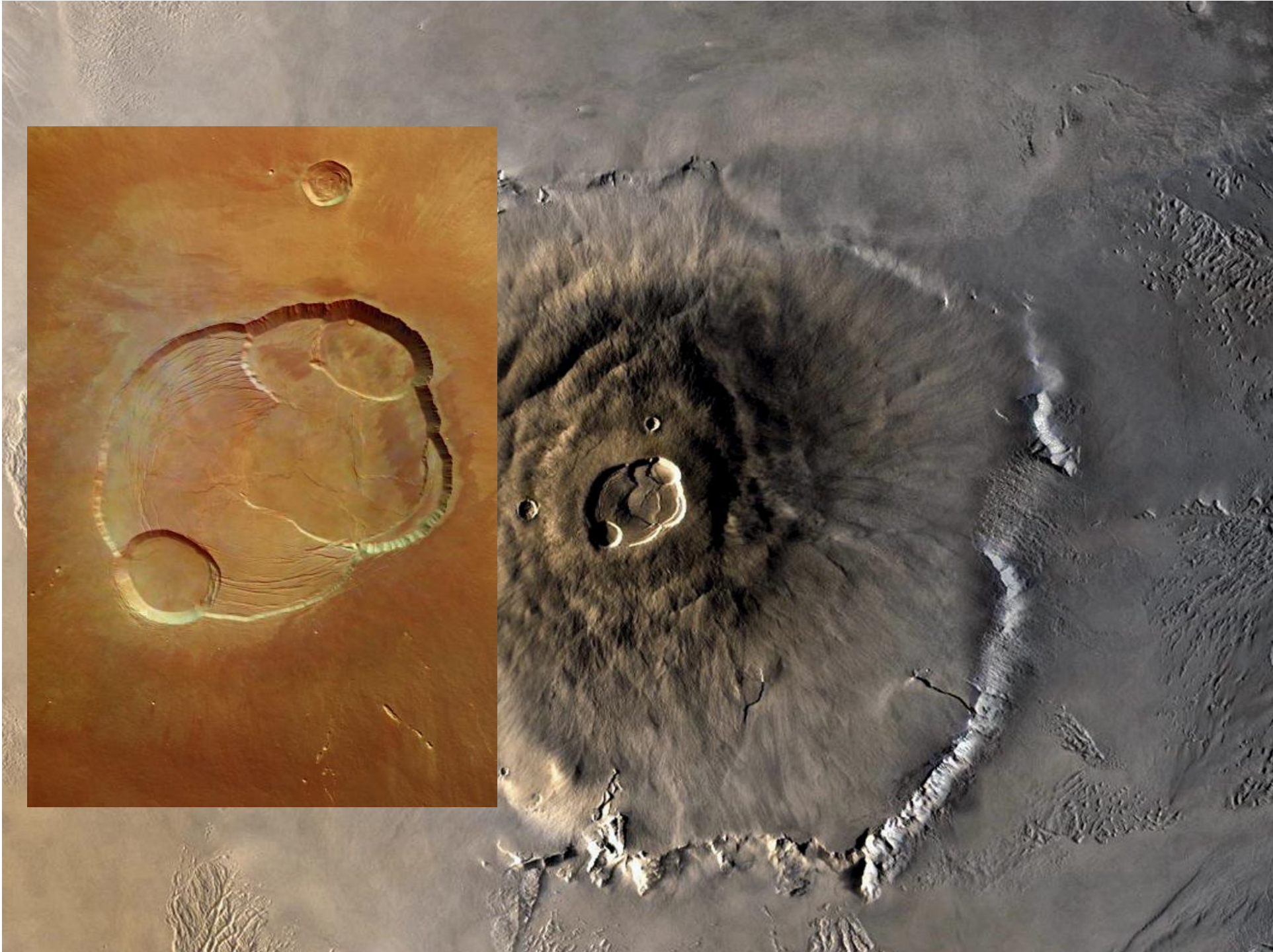


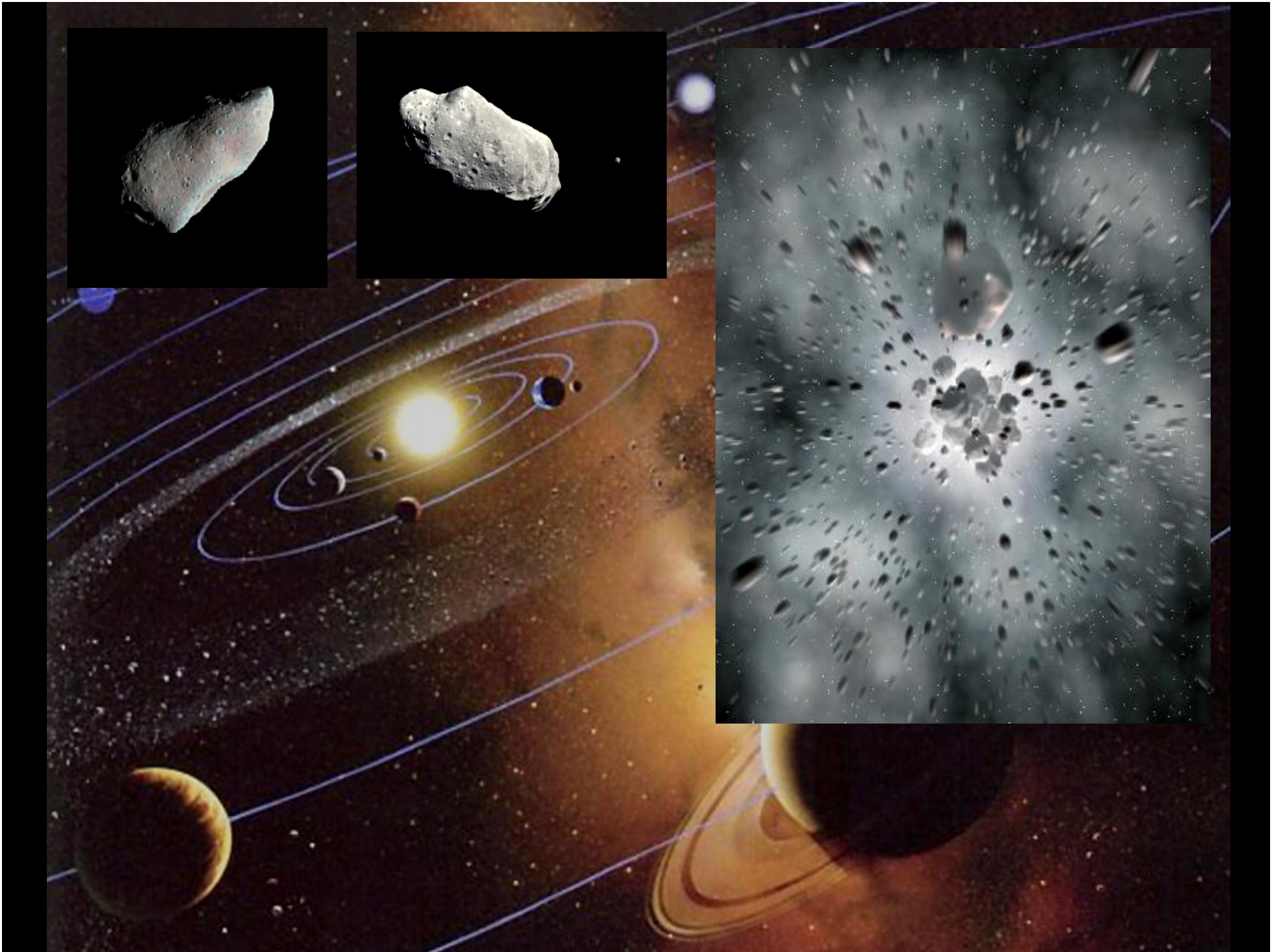








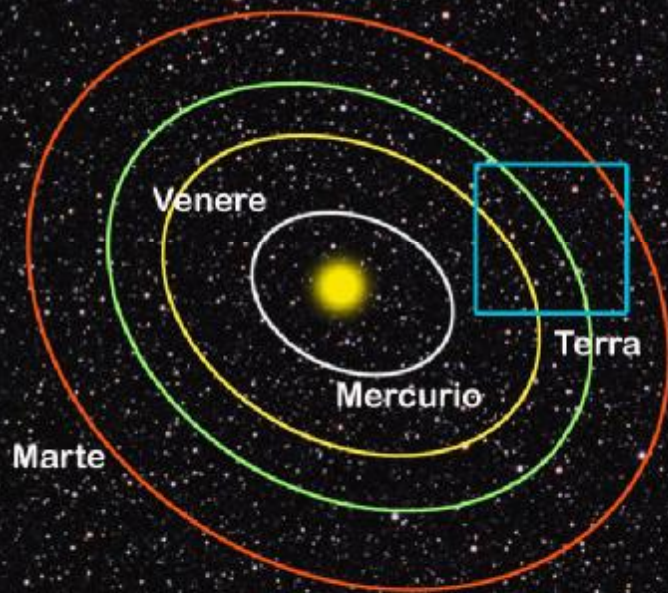


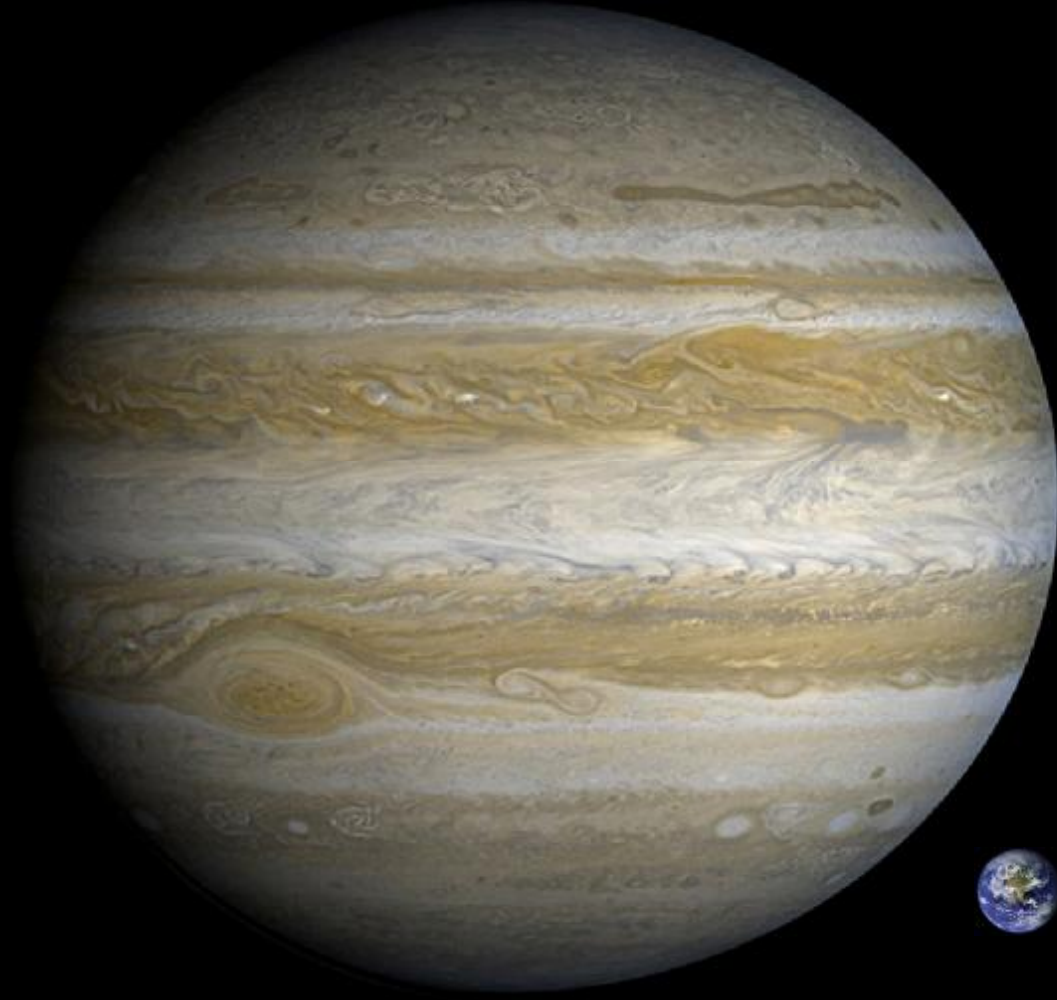


1.000.000.000 km

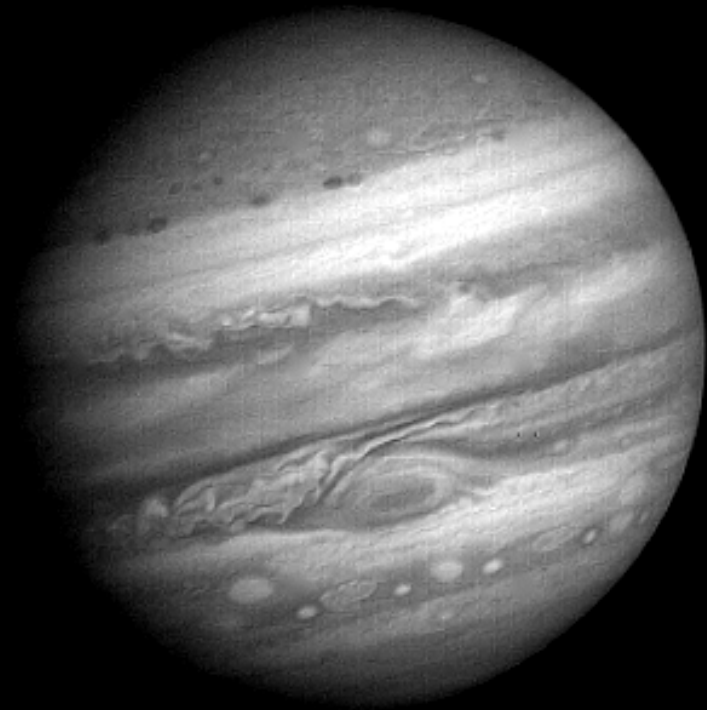
Orbita di Giove

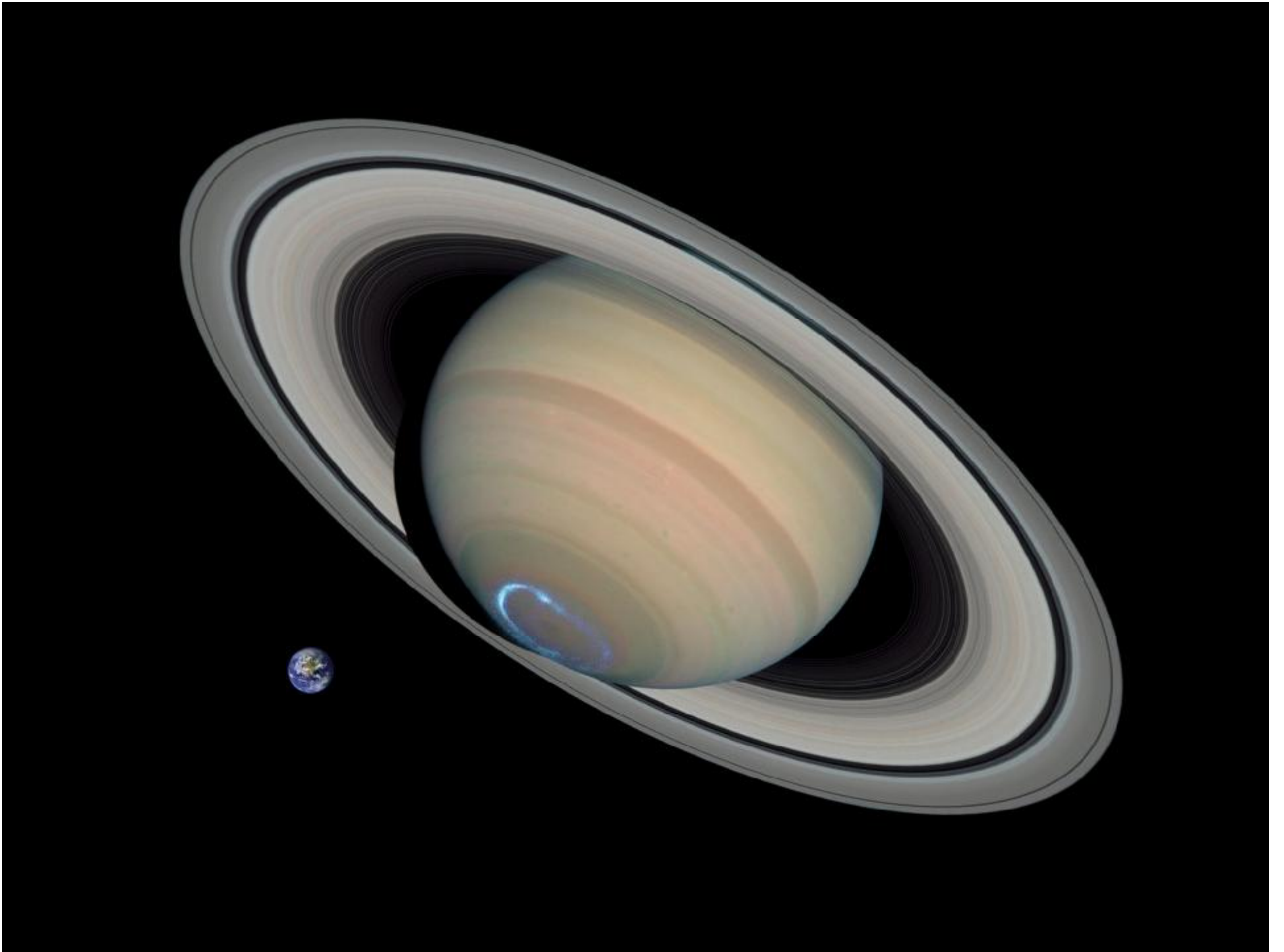
Sistema Solare interno

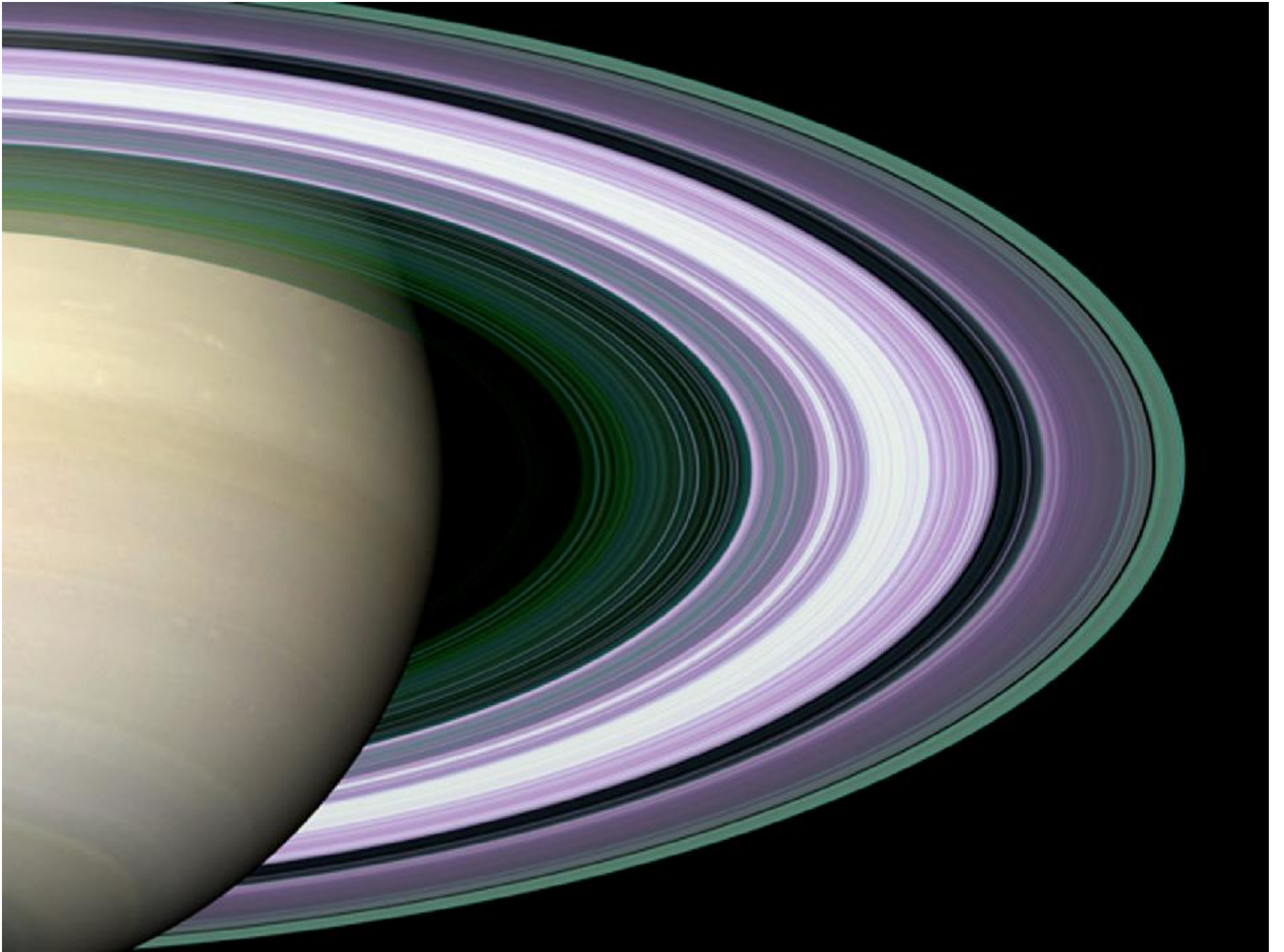


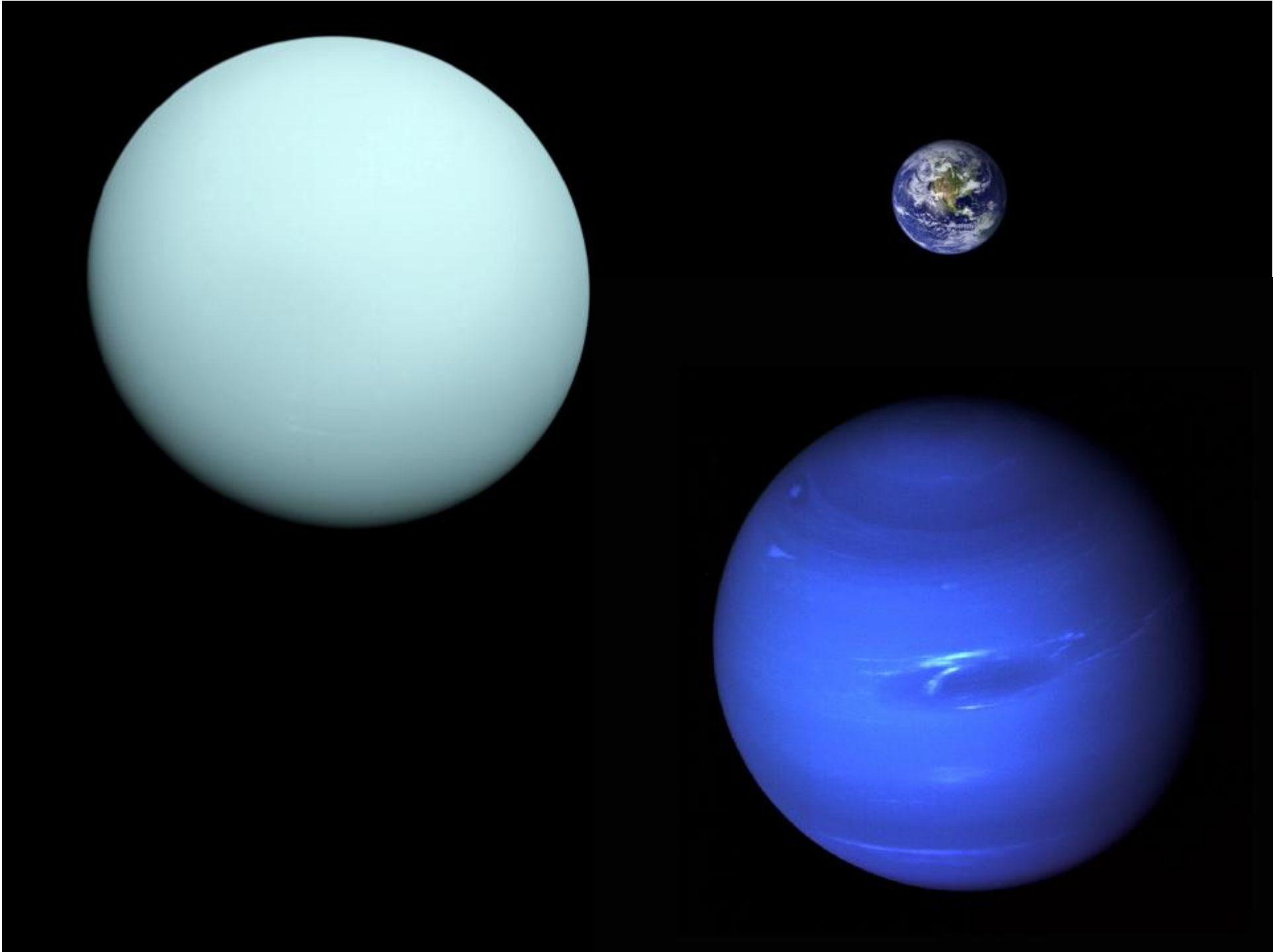












10.000.000.000 km

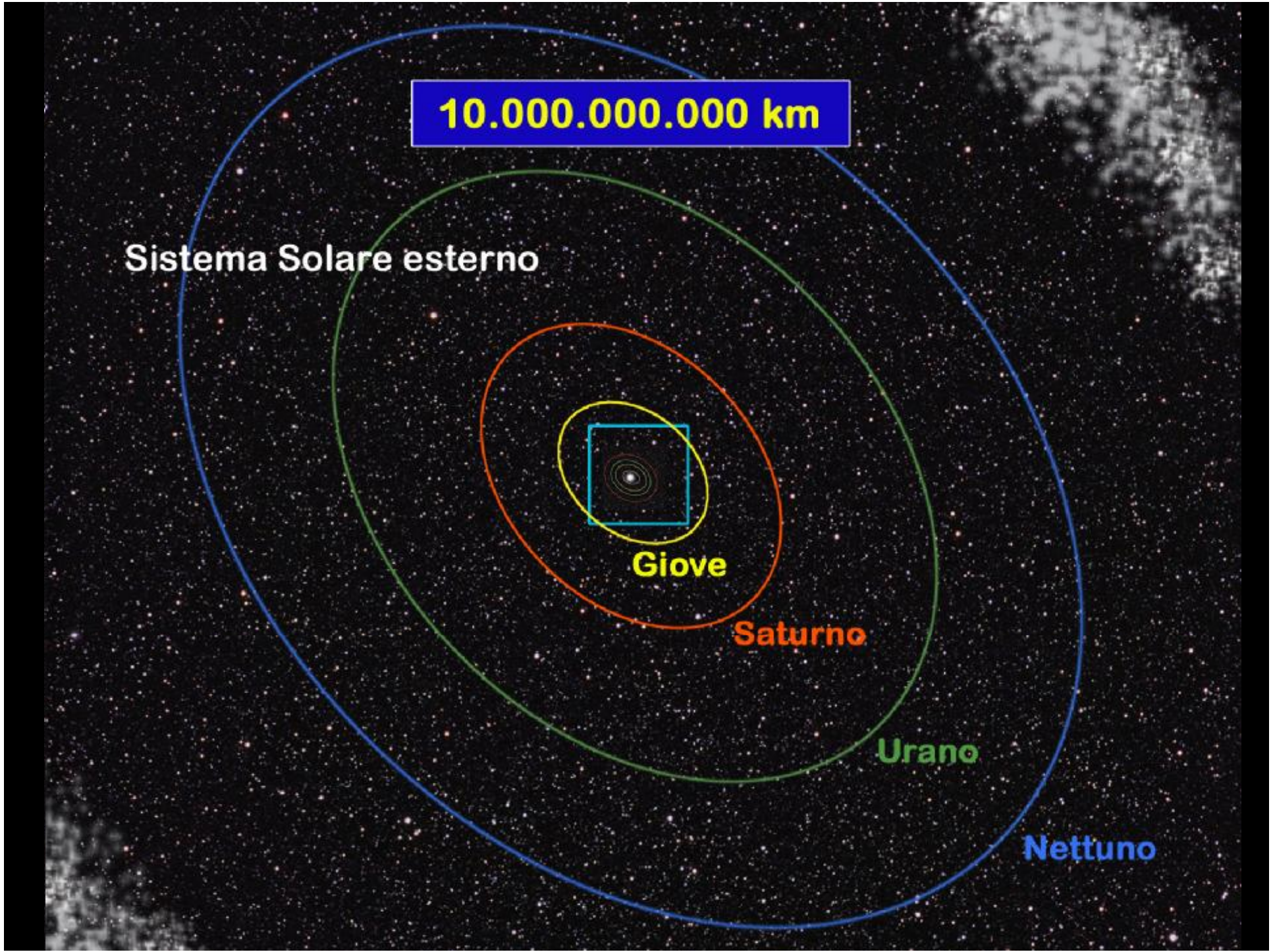
Sistema Solare esterno

Giove

Saturno

Urano

Nettuno





Issione
1065 km



Orcus
1500 km



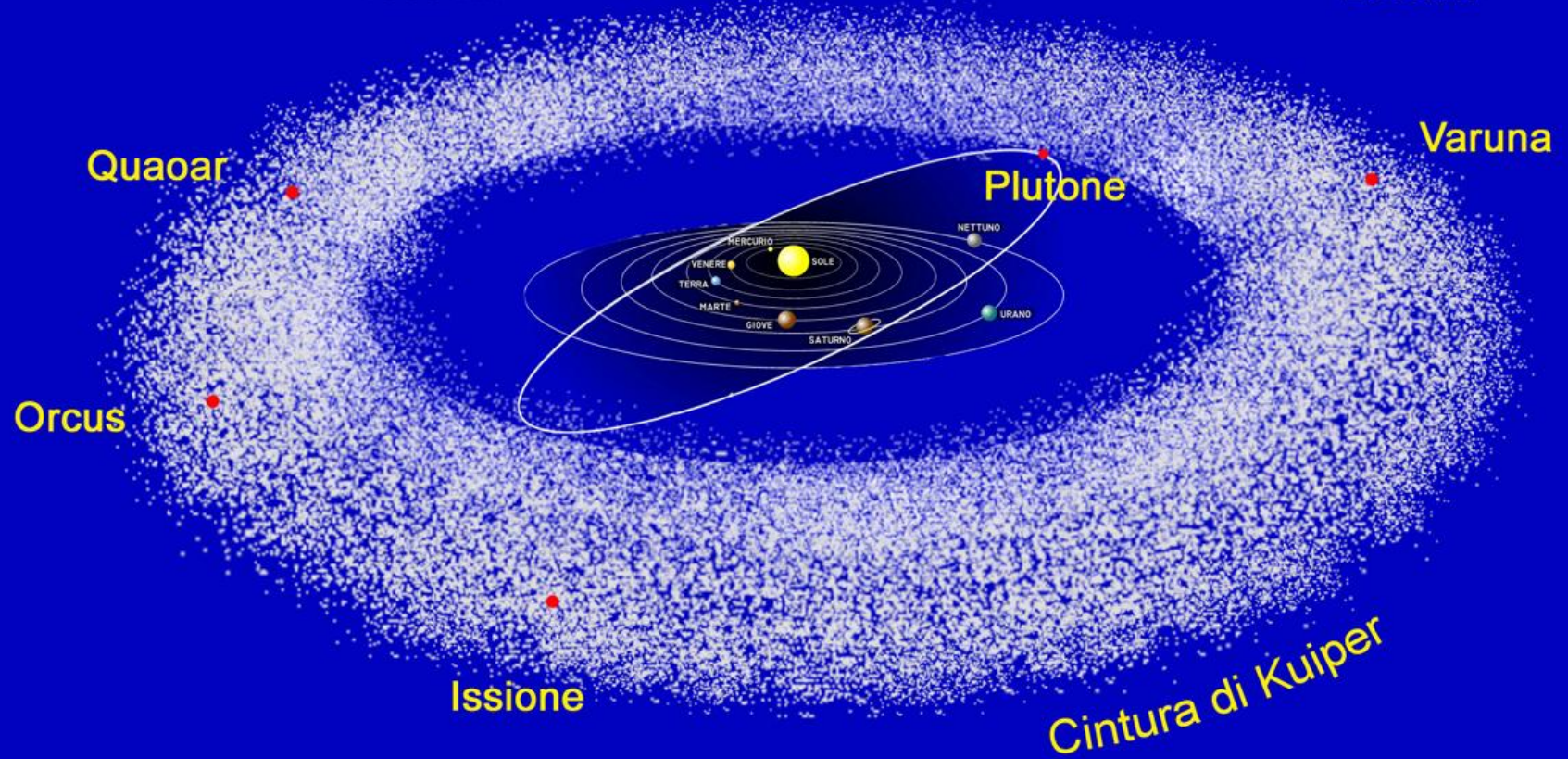
Quaoar
1260 km



Varuna
600 km



Plutone
2300km



Pluto



Charon



Nix

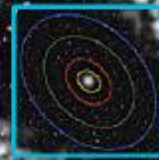


Hydra



100.000.000.000 km

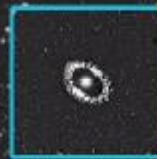
Cintura di Kuiper

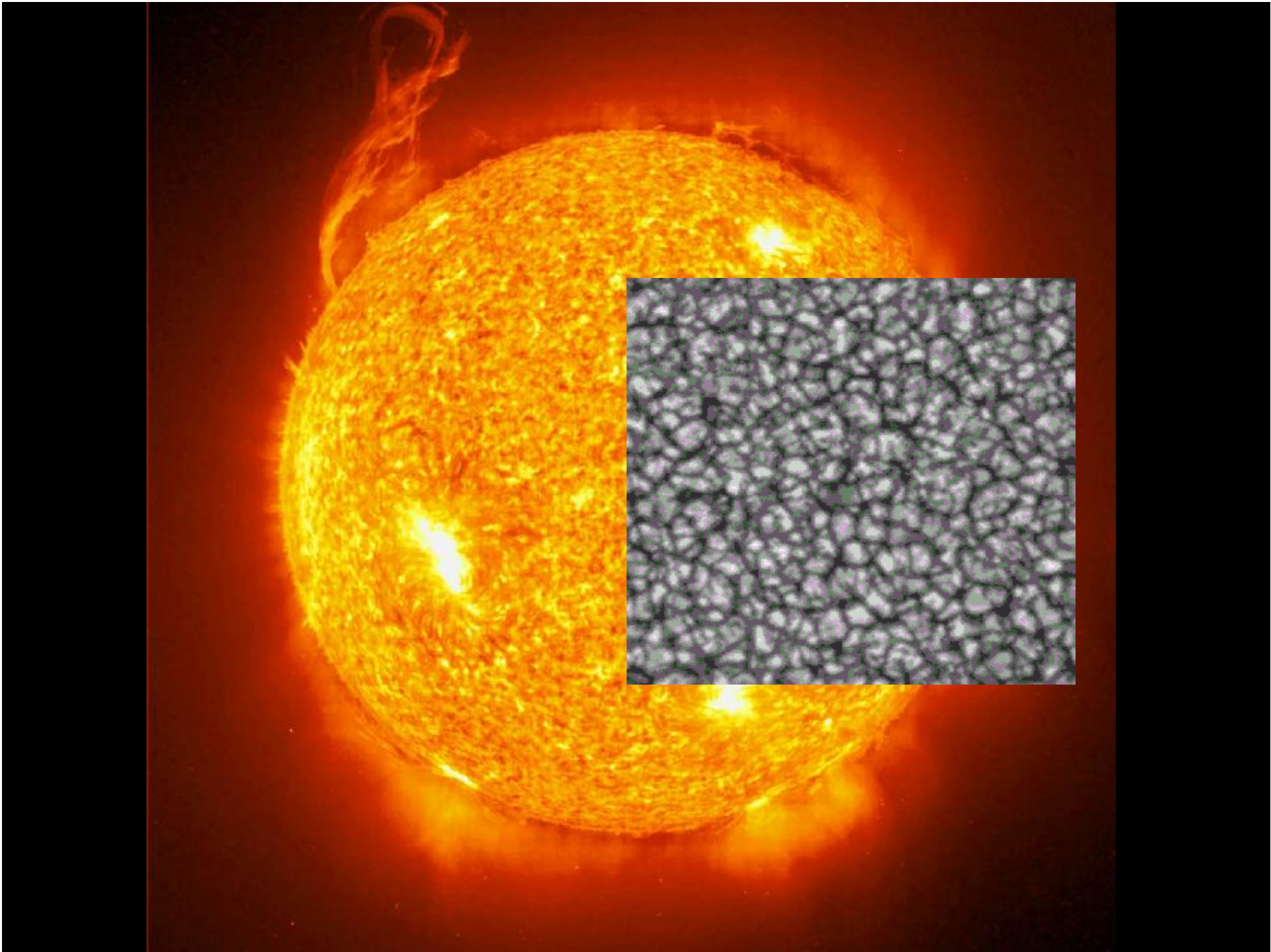




1.000.000.000.000 km

Nube cometaria di Oort



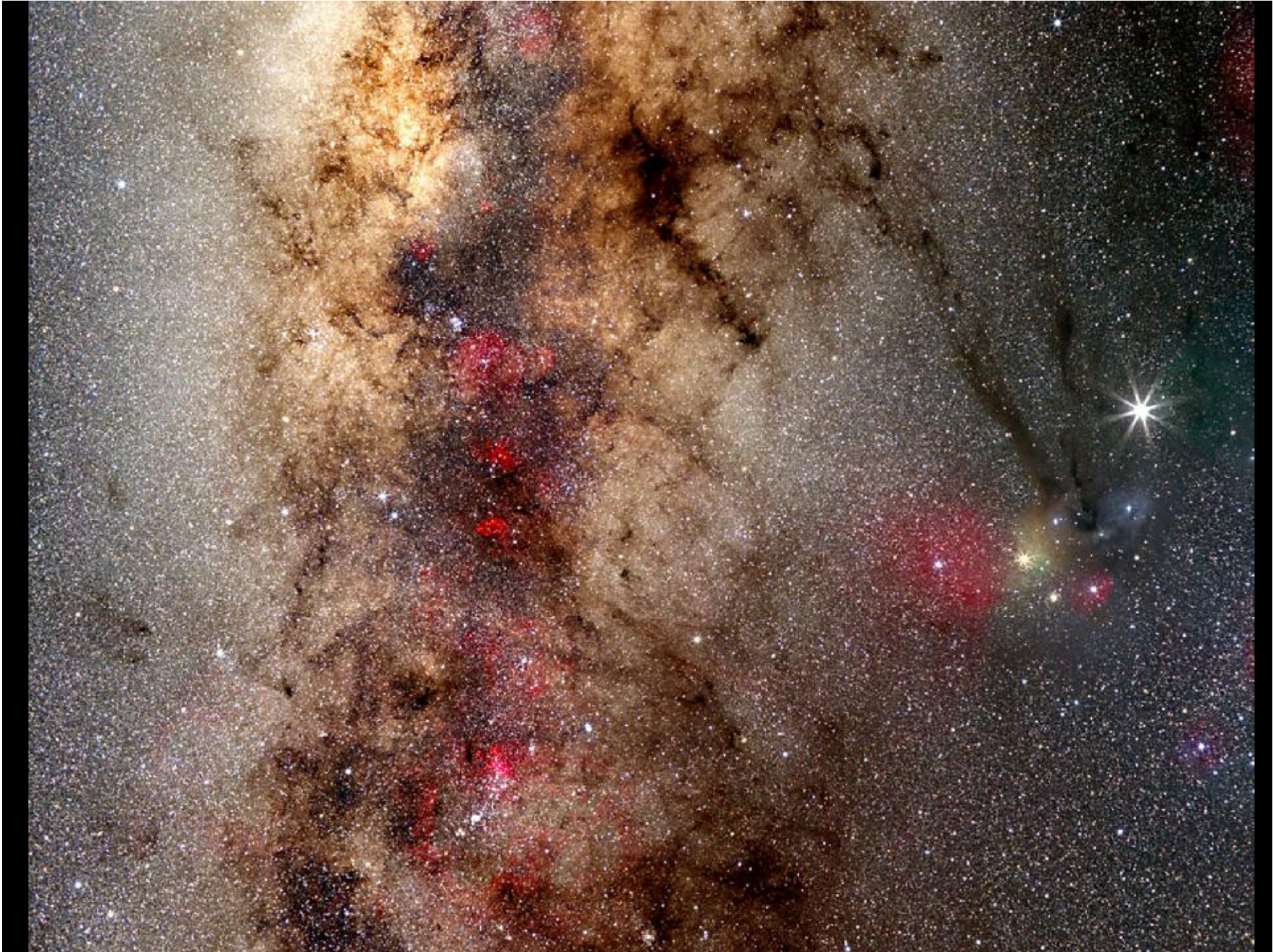


10.000.000.000.000 km = 1 anno luce



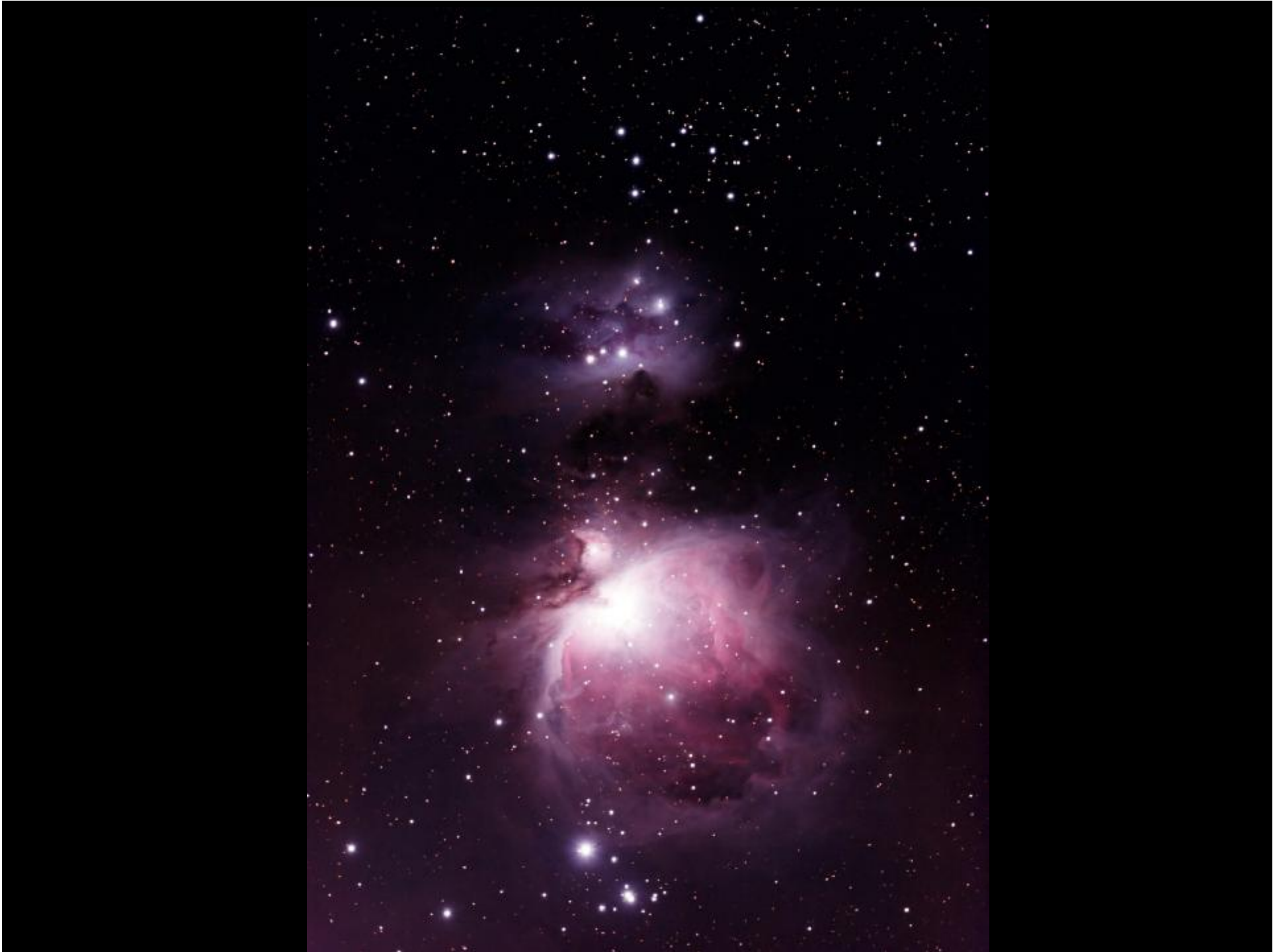




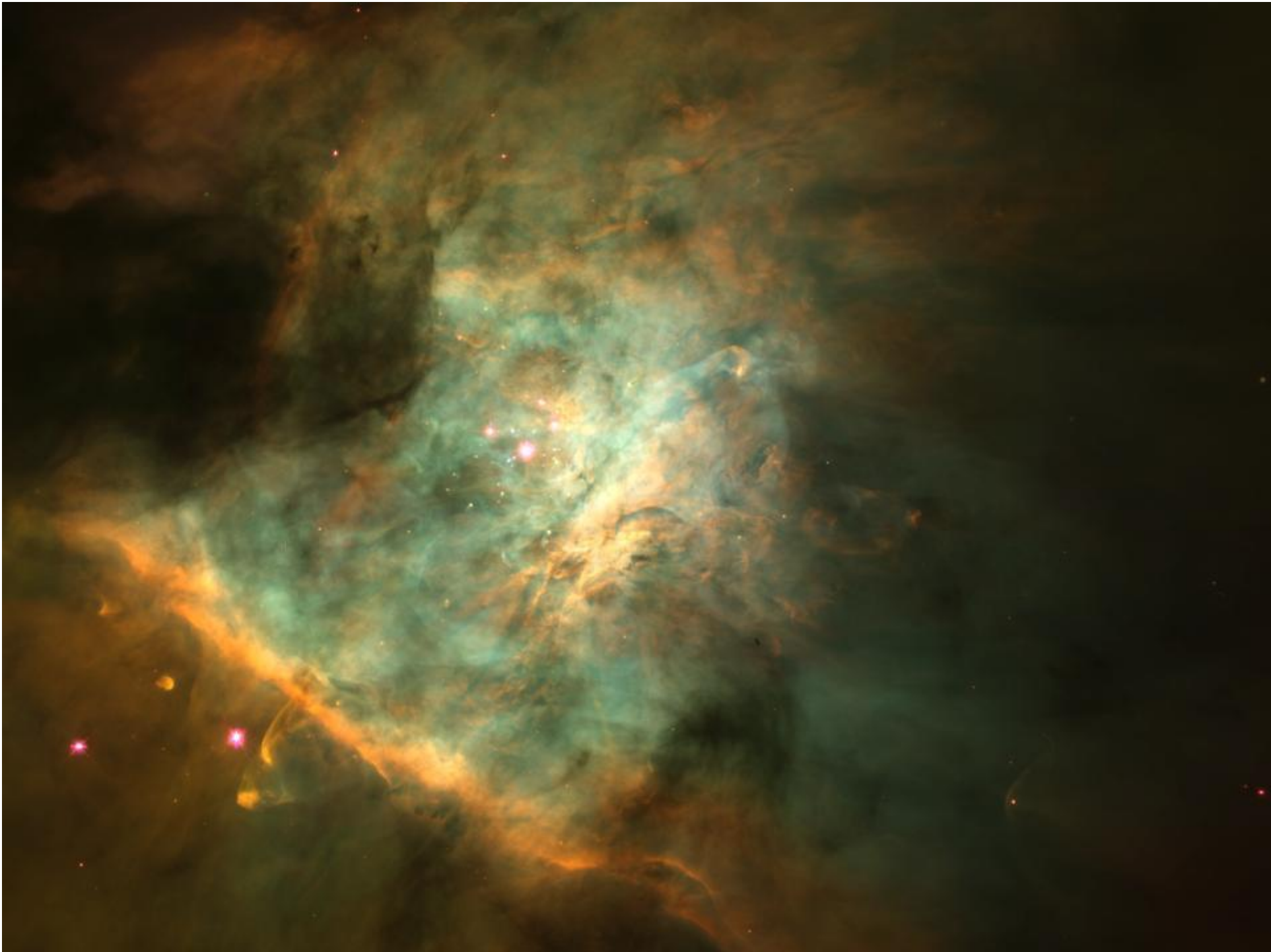












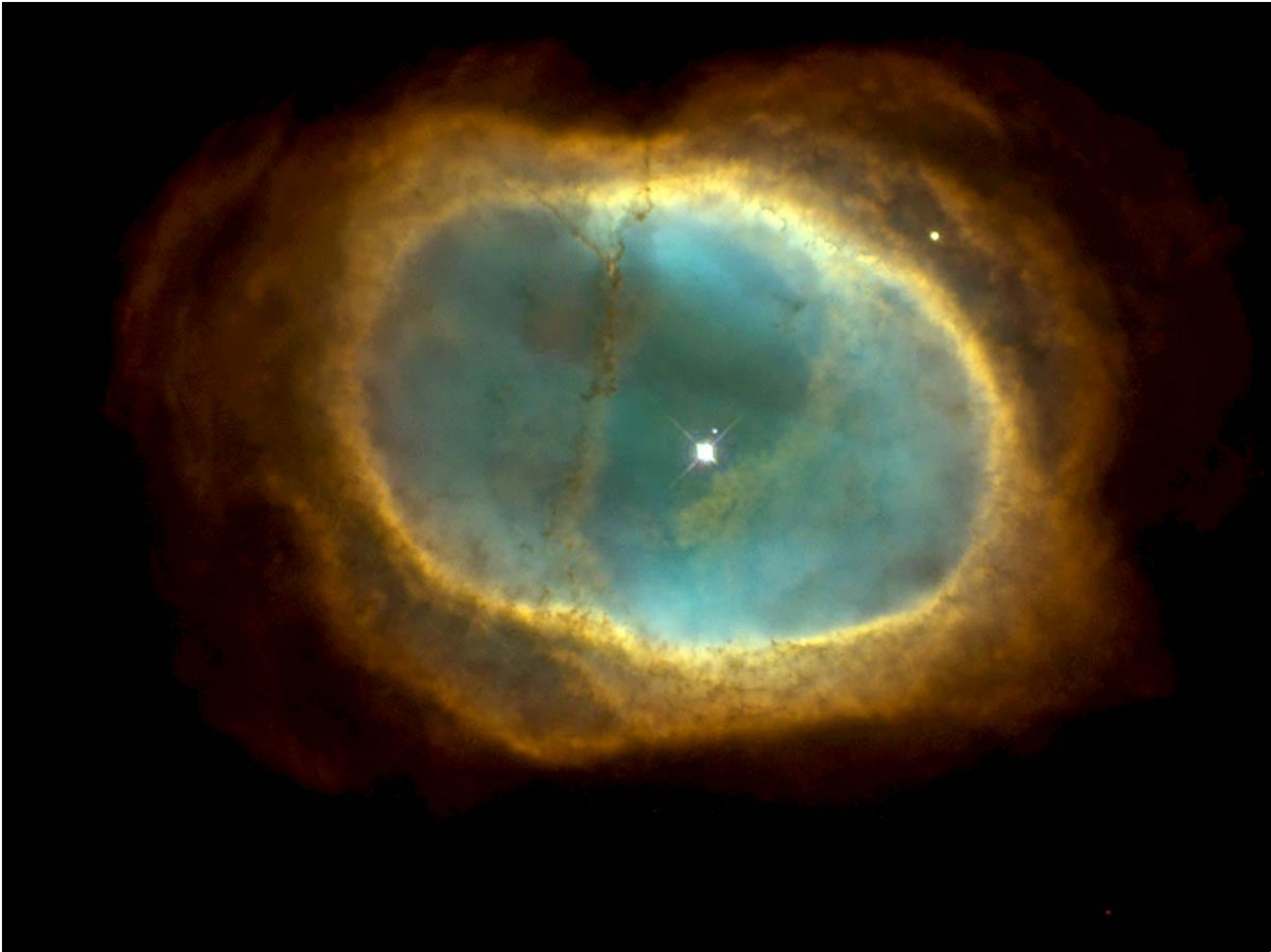




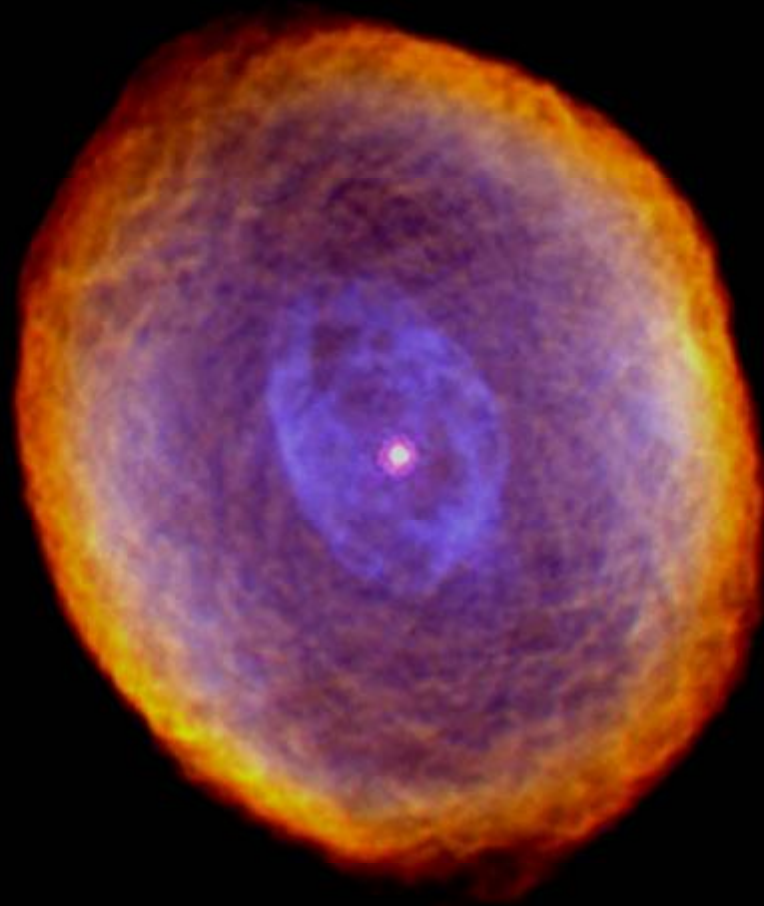
















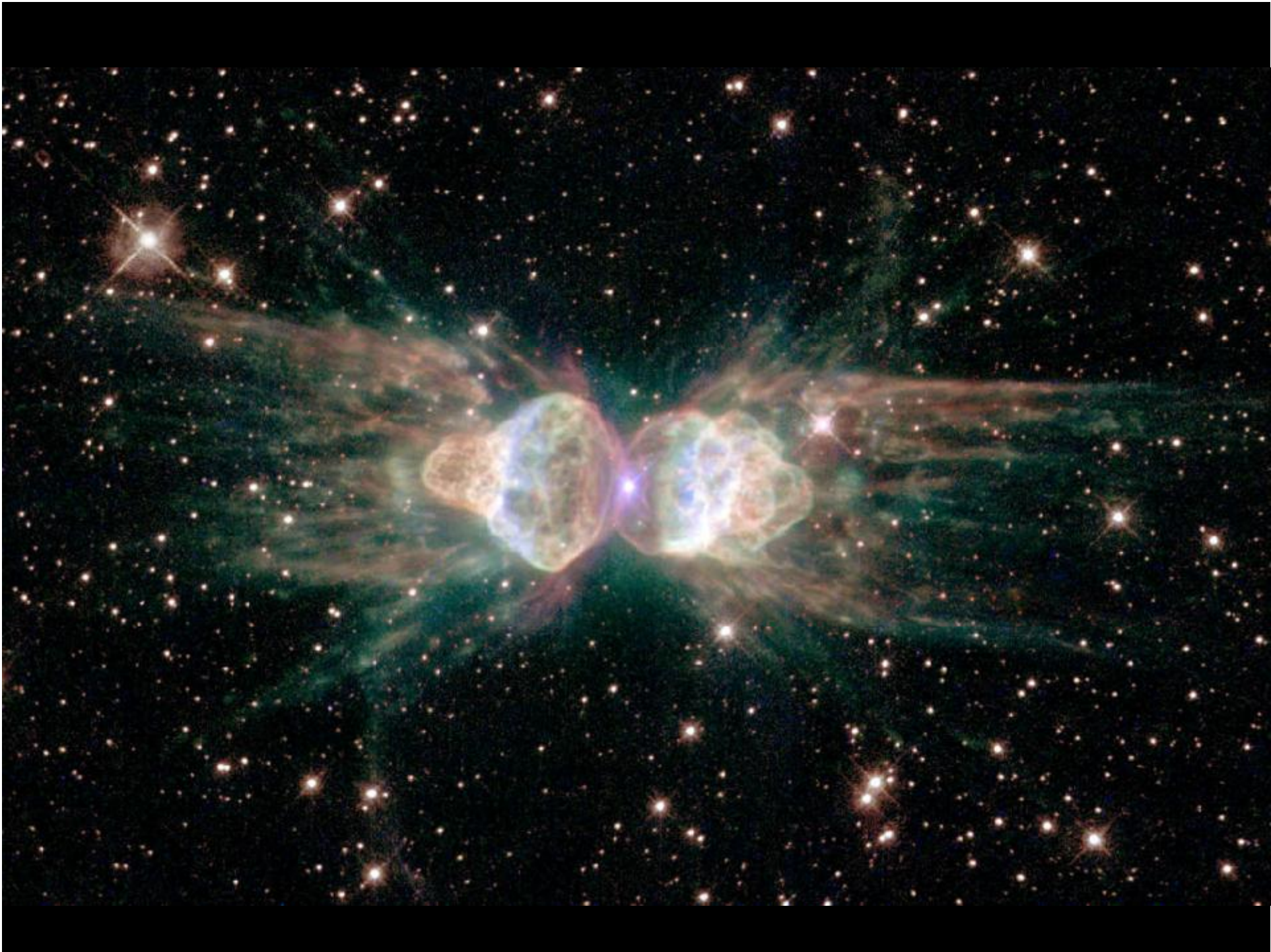
V838 Monocerotis Light Echo

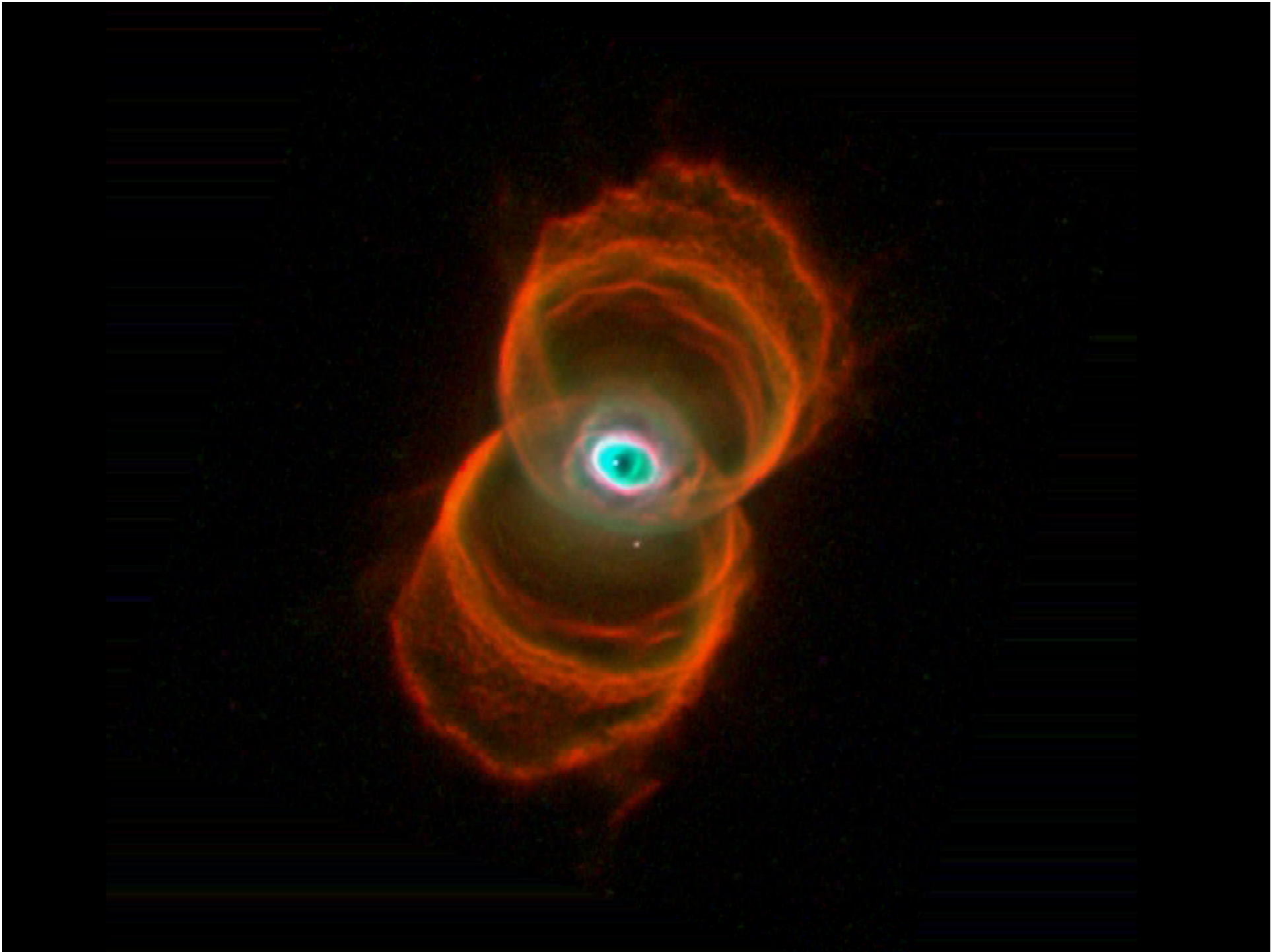


Hubble
Heritage































Laborredel

SOLE

PARCO ASTRONOMICO